

Product Portfolio

Veterinary Medicine



Our veterinary training models and simulators provide realistic hands-on experience and the ability to simulate complex medical scenarios.



A new level of realism - with our veterinary training models!

The training of future veterinarians and therapists reaches a new dimension of realism with our veterinary training models and simulators. Our highly developed anatomical models enable practice-oriented training and optimally prepare future specialists for the diverse challenges in veterinary medicine.

Our medical simulators offer intensive training in all disciplines - from diagnostic procedures to surgical interventions. Thanks to the realistic reproduction of anatomical structures and physiological processes, students can develop and consolidate their practical skills at the highest level.

Our training models and simulators not only enable a realistic practical experience, but also the simulation of complex medical scenarios. This allows future veterinarians to develop their diagnostic and therapeutic skills safely and soundly without exposing real animals to stress or risk.

Invest in the future of animal health - with our modern training models and simulators that rely on the latest technologies and high-quality materials. Rely on our many years of experience and expertise to ensure excellent training quality in veterinary medicine.



This icon indicates which items come with a keycard. The learning card clearly explains all the important parts at a glance. Made from durable, washable plastic. Robust, practical, and easy to understand.



Content

Canine	6
Feline	38
Equine	42
Cow	52
Sheep	58
Pig	62
Mouse & Rat	66
More animals	70
Anatomical Charts	74
Small animal skin	78

Canine





**Olaf
Dog Skeleton**

The Dog Skeleton "Olaf" is an actual cast of the skeleton of a medium-size crossbreed dog with about 45 cm shoulder height. The spine is not moveable, tail is removable. The legs can be moved and removed, perfect for use in courses and further education. The lower jaw is movable mounted, the teeth are represented naturally.

Item No. VET1700



Canine Knee

Knee of an average size dog showing femur, fibula, patella and tibia bones; lateral and medial meniscus; anterior and posterior cruciate ligaments; as well as other ligaments and tendons.

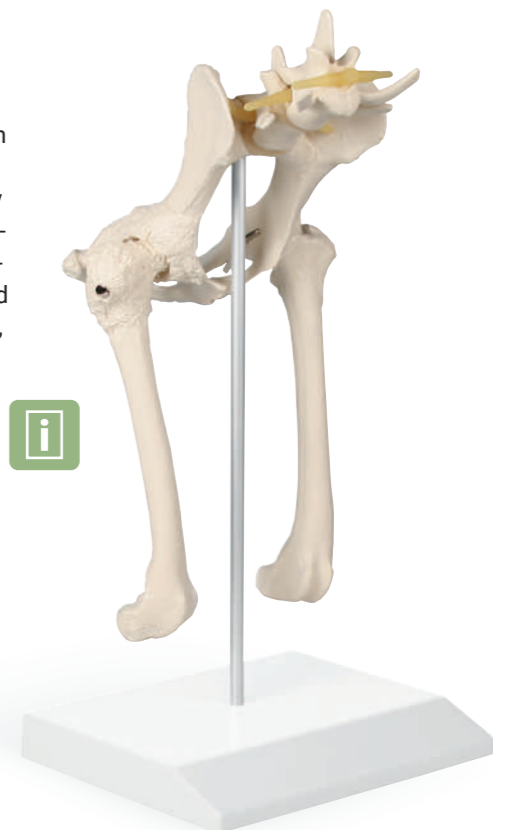
Item No. VET1050



Canine Hip

Average size dog pelvis features both normal and osteoarthritic bone, body of ilium, greater trochanter, head in acetabulum, herniated disc, neck of femur, nerve, sacrum, and third trochanter.

Item No. VET1060



**Dog Skull, big size
(Canis familiaris, replica)**

High quality skull reproduction.
Skull length appr. 21.5 cm.

Item No. VET3085



**Skull, Domestic dog,
German shepherd (Canis familiaris)**

High quality skull reproduction.
Skull length appr. 25 cm.

Item No. VET2015



2 parts:
lower jaw
removable

**Skull of Domestic dog,
boxer (Canis familiaris)**

High quality skull reproduction.
Skull length appr. 18 cm.

Item No. VET2010



**Skull, Domestic dog,
great dane (Canis familiaris)**

High quality skull reproduction.
Skull length appr. 26 cm.

Item No. VET2020



Dog Model (German Shepherd)

A model of a female German Shepherd Dog made on a scale of about 2/3 of its natural dimensions. The model can be divided in the sagittal plane into two halves. One side of the model shows the animal's muscles in detail, while the other shows the hair. The model is assembled on a base with wheels.

Item No. VET3340



The model can be disassembled into 11 parts:

- + lung
- + stomach (2 parts)
- + heart (2 parts)
- + left forelimb
- + tail
- + liver
- + intestines
- + 1 half (muscle)
- + 1 half (outer part / hair)



2/3
natural-
size





Canine ear, healthy/diseased

This handy model has a normal side with cochlea, auditory ossicles, auditory tube, tympanic bulla, middle ear cavity, tympanic membrane, horizontal canal, vertical canal, auricular cartilage, pinna and temporalis muscle; and a diseased side showing inflamed inner ear structures, inflammatory exudate in tympanic bulla, ear canal with partial occlusion from cellular hyperplasia, and an reddened (inflamed) outer ear.

Item No. VET1210



Median section of a dog head

This scaled down model of a median sectioned dog head depicts graphically the anatomy of mouth, tongue as well as throat with trachea and esophagus. Also the olfactory organ, the skull with sinuses and a brain section with cerebellum, brainstem and afterbrain are visible. Supplied on stand.

Item No. VET1300



Canine jaw with healthy and diseased Teeth

This canine jaw of a mid-size dog shows healthy teeth on the right side and diseased/broken teeth on the left side. The nine pathologies shown in this model are: missing premolar, gingival recession, retained deciduous tooth, retained deciduous tooth, worn incisors, gingivitis, plaque, tartar accumulation, periodontal disease and fractured canine. The jaw can be opened, closed and separated for detailed study.

Item No. VET1194



Dog skull with didactic painting

This life-size replica of a dog's skull shows the anatomical structures and is didactically painted so that the individual bones of the skull can be clearly seen and their location and relationship to one another can be learned. An ideal tool for canine osteopaths and canine physiotherapists. The lower jaw can be moved and removed.

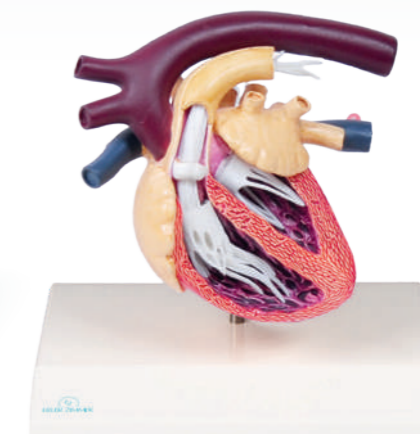
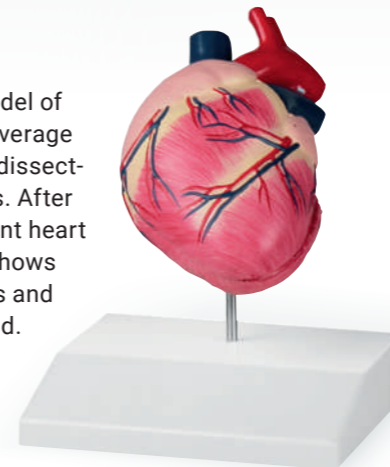
Item No. VET1708



Canine heart

This life-size model of the heart of an average size dog can be dissected into two parts. After removing the front heart wall the model shows ventricles, valves and atriums. On stand.

Item No. VET1250



Canine Heart with Heartworm

Life-size model of a dog's heart infected with *Dirofilaria immitis* (heartworm). Anatomically accurate and highly detailed, ideal for veterinarians, students, and pet owners.

Item No. VET1260



Acupuncture dog

Acupuncture figure of the dog with representation of the acupuncture points, musculature and internal organs Size: 30 cm.

Item No. VET2060

3D Printed Anatomy Product Benefits:

- + Life-size
- + anatomically accurate
- + from co-registered CT and MR data
- + Full-color 3D print
- + with individually colored anatomy



Dog head - superficial and deep dissections

The superficial structures include the nose tip (Apex nasi), nasal wings (Alae nasi), and nonglandular skin (Planum nasale). On the left side, skin removal reveals facial muscles (levator nasolabialis, caninus, buccinator, zygomaticus, parotidoauricularis), masticatory muscles (masseter, temporalis), facial nerves (facial nerve and branches), facial artery, veins, salivary glands (parotid, mandibular), and mandibular lymph nodes.

On the right, removing the mandible exposes deeper structures: the temporomandibular joint, medial pterygoid muscle, mandibular and maxillary nerves, maxillary artery, facial nerve near the external acoustic meatus, and the auriculopalpebral branch. The tongue and its muscles (styloglossus, genioglossus, geniohyoid) with the hypoglossal nerve are visible. Pharyngeal constrictor muscles, common carotid artery, and vagosympathetic trunk are also identified.

Item No. VP9000



Dog forelimb - muscles, tendons, ligaments, vessels and nerves distal to the elbow

This specimen shows a superficial dissection of the lower hindlimb from mid-thigh to foot, including muscles, nerves, and vessels of the femoral canal and popliteal fossa. Muscle insertions at the stifle joint and tibia are visible. The stifle capsule is opened to reveal menisci and collateral ligaments. Extensor and flexor muscles of the tarsus and digits are exposed. The lateral saphenous vein is preserved on the foot and caudal leg. Dorsal and palmar foot structures are dissected. Detailed description available on request.

Item No. VP9010



Dog hindlimb - muscles, tendons, ligaments, vessels and nerves distal to the stifle

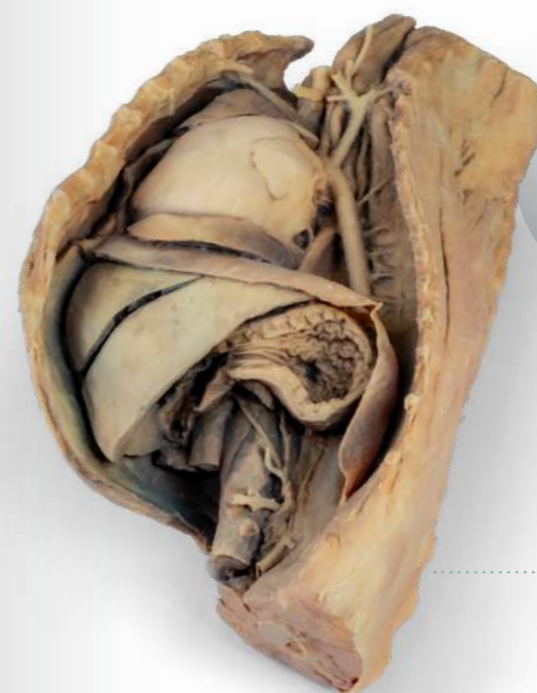
This specimen preserves a superficial dissection of the lower hindlimb musculature from the mid-thigh to the foot, as well as nerves and vessels of the femoral canal and popliteal fossa. The insertions of the muscles of the thigh in the stifle joint and tibial bone are visible. The capsule of the stifle joint has been opened to demonstrate the menisci and the collateral ligaments. Extensor and flexor muscles of the tarsus and fingers are exposed. The dissection preserves the topography of the lateral saphenous vein on the foot surface and caudal aspect of the leg. Dorsal and palmar anatomical structures of the foot are dissected. Detailed anatomical description on request.

Item No. VP9015

Canine heart with dissection

This specimen shows external heart anatomy, including atrial and auricular surfaces. The ascending aorta, pulmonary trunk, and the entry of the cranial and caudal venae cavae into the right atrium are visible. The pulmonary trunk bifurcates into the pulmonary arteries, and the pulmonary veins enter the left atrium. Interventricular and coronary grooves are present. Part of the right atrial wall is removed to reveal the tricuspid valve with chordae tendineae and papillary muscles. The septomarginal trabecula (moderator band) is visible in the right ventricle, along with the path to the pulmonary trunk. The left atrial wall is also opened to expose its lumen.

Item No. VP9030



Canine thoracic cavity left side

This specimen depicts the topography of the heart following the removal of the left lung during a dissection of the thoracic cavity and cranial abdomen of a dog approached from the left side. The cranial and accessory lobes of the right lung remain in situ, serving as anatomical reference points. Within the cranial mediastinum, the brachiocephalic trunk and the left subclavian artery are identifiable as major branches arising from the aortic arch.

Item No. VP9050

Canine Thoracic Cavity, Right Side

This right-sided dissection of an adult dog's thorax shows the thoracic cavity with the lung and thoracic wall removed. Pulmonary vessels remain near the heart. In the cranial mediastinum, the cranial vena cava, right subclavian artery branches, longus colli, trachea, and esophagus are visible, along with the phrenic nerve, vagosympathetic trunk, and stellate ganglion. The middle mediastinum shows the heart (in fibrous pericardium), pulmonary vessels, and main bronchi. The caudal mediastinum contains the caudal vena cava, phrenic nerve, esophagus, vagal trunks, thoracic aorta, azygos vein, and sympathetic trunk. The diaphragm and surrounding musculature are intact.

Item No. VP9040





CooPeR
Canine CPR Manikin

Our canine CPR manikin, is designed for training purposes to teach individuals how to perform cardiopulmonary resuscitation (CPR) techniques on dogs.

CooPeR allows trainees to practice proper CPR techniques, including chest compressions and rescue breaths, in a controlled environment. This training possibility ensures that veterinary professionals can respond effectively in emergency situations and potentially save a dog's life.

A femoral pulse check is also possible. CooPeR comes with 100pcs replacement airways and a training mat.

Item No. VET4660

Replacement
Lungbags, 100 pcs
Item No. VET4660A



**CasPeR
CPR dog**

The Dog provides training in mouth-to-snout resuscitation using individual, disposable airway bags. These cost-effective shield/lung bags prevent cross-contamination between students and eliminate the need to disinfect the manikin after each use. The dog manikin teaches correct hand placement, compression depth, airway maintenance, femoral pulse check, and proper ventilation. It has no feedback system; the instructor must assess performance. Airways can be changed quickly and tool-free.

Item No. VET2500

Replacement airways, disposable. Pack of 100pcs
Item No. VET2500B



CPR training dog, basic version

Canine basic life support is the same user friendly trainer as Advanced Sanitary CPR Dog. Students may practice the appropriate rate, pressure and position of cardiac massage and coordinate the respiratory cardiovascular functions. A visible chest rise appear when correct ventilations are applied.

Item No. VET2540



Advanced CPR Dog, extended version

The advanced CPR dog provides each student with a disposable nosepiece with a one-way valve. Students can practice assisted breathing, cardiac massage rate, pressure, and position, as well as coordinate respiratory and cardiovascular functions. An IV can be set up for advanced training. The device connects to a box that lights up to show correct ventilation, cardiac massage position, and compression depth, with a beep for excessive pressure. Chest rise is visible with proper ventilation. Includes carrying case, 10 nosepieces, and 3 disposable airways.

Item No. VET2550



K9 Thoracentesis

Our carefully crafted canine Thoracentesis manikin will help practitioners in performing chest tube placements, and simulating emergency trauma by aspirating air and fluid from the thoracic cavity. Convenient anatomical landmarks are placed at key points for ease of use and quick learning.

Item No. VET4045



K9 Goldie Breath/Heart Sound Simulator

The Goldie BHS Simulator lets students practice auscultation with a stethoscope using realistic, patient-based sound scenarios. The canine manikin has five speakers, lights for expiration, and runs on a 9V battery. Each unit includes a Tutor MS, Breath and Heart Sound modules, five speakers, and a battery. Breath sounds range from normal to pathological (e.g., wheezes, crackles, stridor), and heart sounds include arrhythmias and murmurs (e.g., AFib, PDA, VSD). Limited warranty included.

Item No. VET4040



**K9 Jerry
CPR manikin**

Jerry is the ideal pet first aid teaching manikin, featuring working lungs, an artificial pulse for mouth-to-snout resuscitation, and a movable leg to locate compression sites. It allows for bandaging practice and comes with a carrying case, kneeling pad, brush, and five disposable lungs. Face shields are sold separately.

Item No. VET4000

**K9 Jerry
Advanced Airway manikin**

Jerry is a full-sized manikin with a realistic airway, working lungs, and an artificial pulse for practicing endotracheal placement, compressions, and mouth-to-snout resuscitation. It also supports splinting and bandaging, with cleanable and replaceable parts.

Item No. VET4010

Replacement Parts for VET4000, VET4010 + VET4020:
lungs, 24pcs pack Item No. VET4000A lungs, 72pcs pack Item No. VET4000B Manikin face shields, roll of 36 pcs Item No. VET4000C



**K9
Intubation Trainer**

Elegantly simple, this model ensures accurate endotracheal placement – into the trachea or mistakenly into the esophagus. Realistic trachea, esophagus, epiglottis, and functional lungs are built into the dog bust. The pivot-mounted head on a table clamp allows easy positioning.

Item No. VET4080

**K9 Jerry
Critical Care**

Jerry is a fully equipped emergency veterinary training manikin for trauma, airway management, ventilation, intubation, resuscitation, and chest compressions. Features include realistic anatomy, working lungs, artificial pulse, and support for splinting. Accessories include a kneeling pad, endotracheal tube, syringe, brush, disposable lungs, and a bonus K-9 IV trainer with case.

Item No. VET4020

Femoral Leg Bone Fracture

Option for VET4000, VET4010, VET4020: The manikin (VET4020) is optionally available with a long, oblique femur fracture on the right hind leg. This extension enables training of frequent K9 fractures. The fixed fracture can also be ordered for the CPR Jerry (VET4000) and Airway Jerry (VET4010).

Item No. VET4022

**K9 Emily
Positioning Manikin**

Emily is a veterinary training model designed to teach proper animal positioning. It helps students practice techniques for surgeries, x-rays, and spinal procedures safely. Fully articulated, Emily's joints rotate realistically with 90° flexibility. The kit includes a carrying case, kneeling pad, and brush.

Item No. VET4030





Marshal offers the following functions:

- + Lacerated paw for bandage training
- + Manual femoral pulse control
- + Bullet wound for wound packing – Stop the bleed
- + Basic cardiopulmonary resuscitation (CPR) techniques (without chest lift)
- + 2-layer exchangeable fur (with robust zippers and sewing)
- + Moveable head
- + Movable jaw for muzzle training / dog bite training
- + Open nostrils
- + Endotracheal intubation (without chest lift)
- + Flexible tongue
- + Compartment with Bluetooth speaker (different barking, whining and crying sounds available)
- + Movable joints
- + Exploded bleeding stump for tourniquet training (non-exchangeable)

**K9-Marshall
Military Working Dog Simulator**

The "Marshal" military working dog simulator represents a Belgian Malinois and corresponds in size and weight (30 kg) to a real dog and has movable joints. Military working dogs are used in many areas by the military and police and, like their human comrades, can be injured in the line of duty. **Marshal helps train vets, K9 Combat First Responders and dog handlers.**

With Marshal you can present a variety of realistic scenarios during training.

Made of silicone with internal skeleton. Body cover made of robust material so that Marshal can be exposed to adverse environmental influences such as moisture and dirt without being damaged. Dog vest and goggles not included.

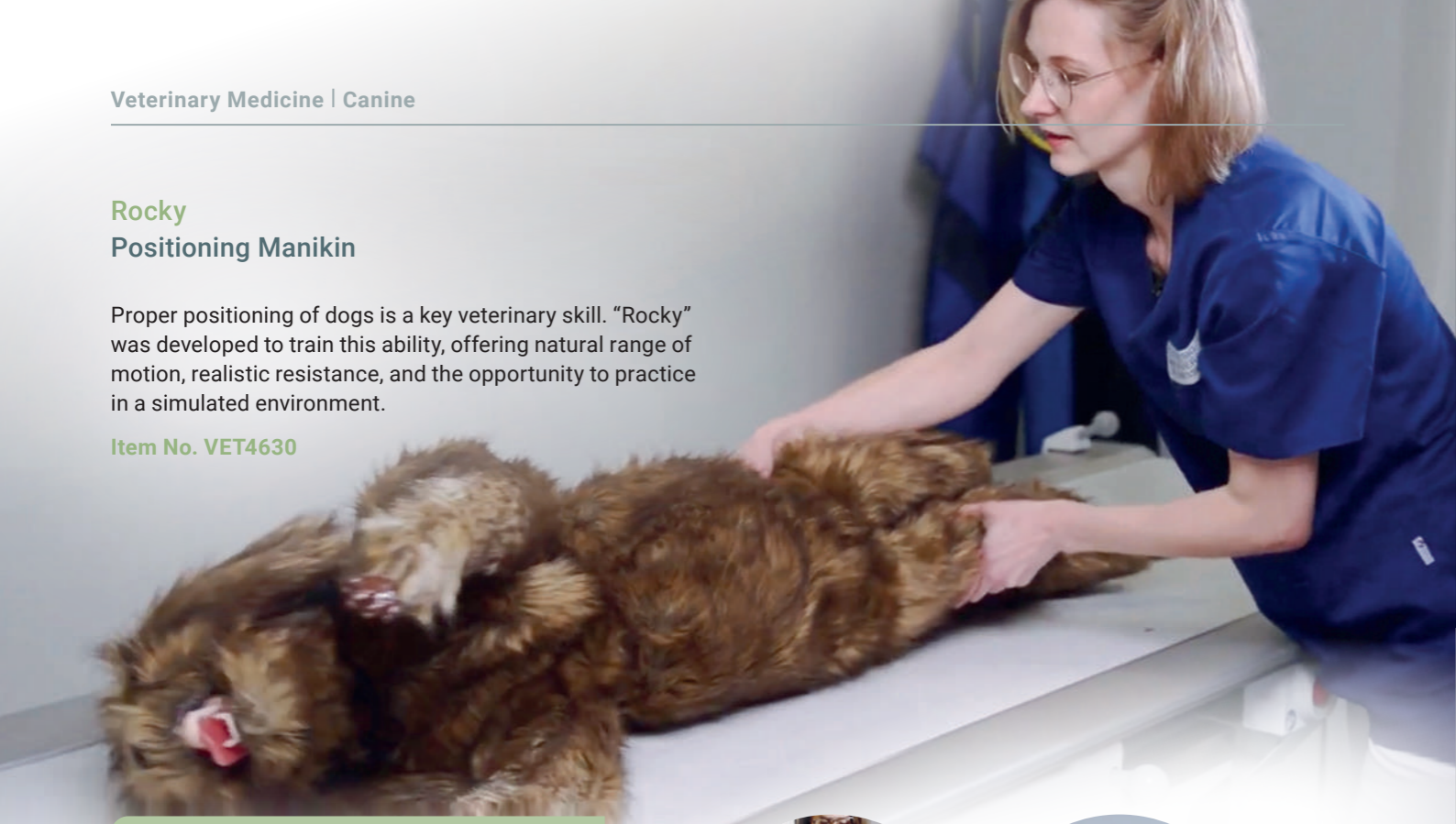
Item No. VET4700



Rocky Positioning Manikin

Proper positioning of dogs is a key veterinary skill. "Rocky" was developed to train this ability, offering natural range of motion, realistic resistance, and the opportunity to practice in a simulated environment.

Item No. VET4630



Positioning is a skill required in many situations, such as:

- + for neutering or spaying
- + for abdominal surgeries
- + for X-ray examinations

Various positioning techniques:

- + spinal stabilization positioning
- + dorsal (back) positioning
- + other specific positions

Joint mobility:

- + Shoulders and hips: 90° range of motion
- + Knees, elbows, hock (ankle), and carpal (wrist) joints: same mobility as shoulders and hips



Vicky Venipuncture & I.M. Simulator

A lateral saphenous venipuncture is a procedure used to access a vein for blood collection or intravenous (IV) injections in dogs. "Vicky" allows trainees to practice venipuncture procedures on the lateral saphenous vein as well as intramuscular and subcutaneous injections in the upper thigh.

The base is designed for a blood collection from a dog in a standing position. The leg can easily be removed from the base and give the opportunity to collect blood in a lateral recumbent position (lying on its side).

Item No. VET4680



IV. Injection Leg Canine

With our canine i.v. Injection leg (forelimb) the correct course of an intravenous injection can be trained. The forelimb has an artificial fur which can be clipped with a clipper. Multiple shearing operations are possible by rotating the fur. The cephalic vein can be palpated and punctured. A peripheral venous catheter (PVC) can be placed without any problems. The paw comes with a replacement fur and an additional vein tube.

Item No. VET4610



Canine i.v. leg

This training model shows the left front leg of a medium-sized dog in a lying position. It has two interchangeable cuffs - normal fur for blood sampling and a shaved area for infusion catheters. The venous system allows real blood sampling. Ideal for practicing blood sampling, bandaging and restraining, alone or in a team. Perfect for veterinary education and training. Includes portable storage box with infusion holder, blood powder, syringe, catheter and two fluid bags.

Item No. VET2560



Canine Leg Vascular Access Simulator

Train venipuncture and vascular access with our durable dog leg simulator made of high-quality silicone. The model is designed for blood sampling and catheters up to 22 gauge and has a soft, realistic cephalic vein. It allows practicing without a partner or live animal. The set includes a 1000 ml infusion bag, artificial blood powder, a skin and instructions for assembly, care and use.

Item No. SRE0600



Replacement Parts:

Skin Black Item No. SRE0600-1	Vein Item No. SRE0600-2	IV Bag Item No. SRE0600-3
Artificial Blood Powder Item No. SRE0600-4	Bundle: Black Skin, Vein, iv bag & Artificial Blood Powder Item No. SRE0600-5	Replacement Core Item No. SRE0600-6



K-9 IV Trainer

Specifically built to teach the drawing of blood and performing of injections, our Canine IV Trainer is the perfect pedagogical tool for this purpose. It is realistically sculpted as the hind limb of a dog. This simple product will help students become accustomed to these tactile procedures.

Item No. VET4060



Rufus Bandaging Manikin

The detailed Rufus dressing training manikin is a comprehensive learning device for intensive therapy students. The life-size model is ideal for practicing practical skills, modern dressing techniques and mouth-to-nose resuscitation. Movable joints (knee, elbow, carpal, ankle, shoulder and hip joints) allow up to 90° rotation. Velpeau and Ehmer slings can now be practiced on the right front and rear leg.

Item No. VET4050



Veterinary Vascular Access Sleeve, animal (dog)

Practice venipuncture and vascular access with our high-quality vascular access dog leg holder made of durable silicone. The model is specially designed for blood sampling and catheters up to 22 gauge. The soft, realistic cephalic vein enables effective training without a partner or live animal. The set includes a 1000 ml infusion bag, artificial blood powder, a skin and instructions for assembly, care and use.

Item No. SRE0801

Replacement Skin
Item No. SRE0801-01





Bandage trainer canine paw

A dog's paw is stressed with every step and can be easily injured by broken glass, nails, thorns or other sharp objects.

With our artificial canine paw you can practice the correct application of bandages. The paw can be used to simulate a sitting or lying position. Separate toes allow for the application of cotton.

Item No. VET4590

Characteristics:

- + flexible joint
- + sitting or lying position can be simulated
- + separate toes
- + Suction cups under the stand give a safe stand.



Canine claw trimming paw

The dog paw trainer for learning how to cut claws. It has replaceable nails of various types. The paw model is made of silicone and mounted on an ergonomic base made of plexiglass. The veterinary trainer can be filled with artificial blood, which flows to the claws, to increase the realism of training.

The set includes: paw on a frame, 100 claws (25 pcs. normal black, 25 pcs. normal clear, 25 pcs. long black, 25 pcs. long clear), 200 ml of blood-imitating fluid in a bottle, syringe.

Item No. VET4750

Replacement Parts:

Claws/nails, long, transparent (100 pcs)

Item No. Art. Nr. VET4750A

Claws/nails, long, black (100 pcs)

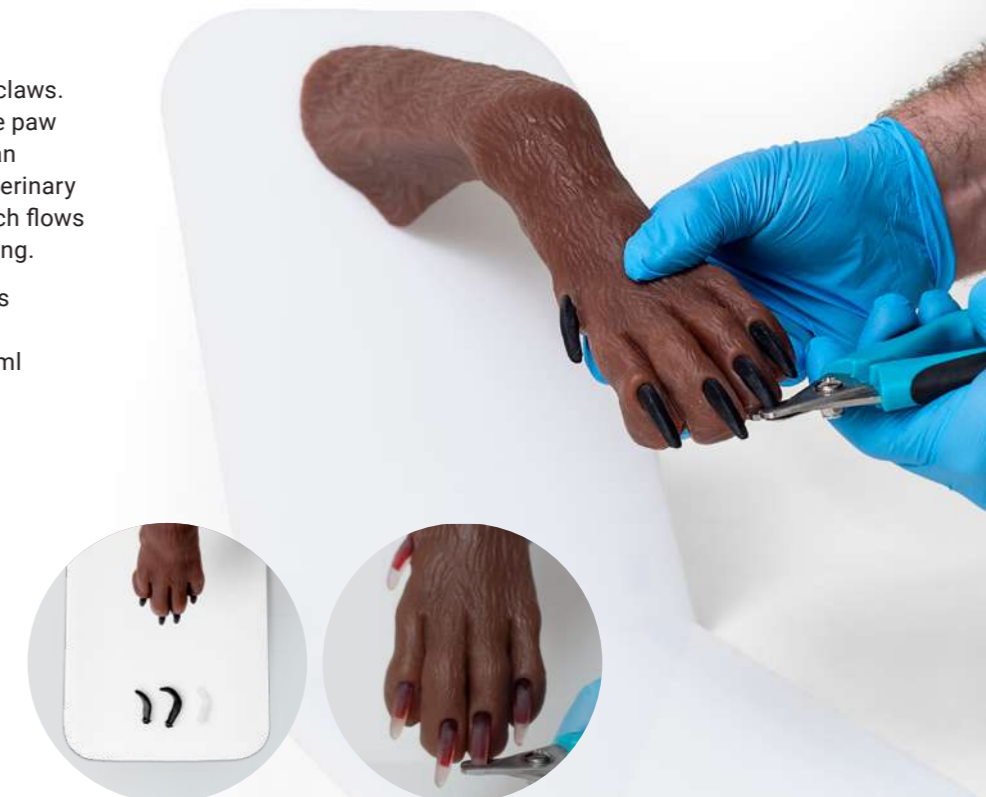
Item No. VET4750B

Claws/nails normal, transparent (100 pcs)

Item No. VET4750NC

Claws/nails normal, black (100 pcs)

Item No. VET4750NCZ



K9 Otoscopy Simulator

Our otoscopy simulator can be used to train how to correctly carry out an ear examination in dogs. The external auditory canal up to the eardrum is realistically reproduced. The ear canals were obtained from CT data. A healthy as well as a narrowed ear canal is modeled.

To check success, the eardrums in both ear canals were marked in color. There is an opening in the healthy ear canal so that artificial cerumen can be introduced into the model. The dog head is made entirely of soft silicone and is detachably mounted on a tripod. The tripod offers the possibility of fixing the dog's head in a frontal and side examination position. The table clamp allows the tripod to be firmly attached to a table.

Item No. VET4670

Canine jugular venipuncture head

Accessing the jugular vein is a common procedure in veterinary medicine and is often used for various purposes such as administering medications, fluids, obtaining blood samples, or performing certain diagnostic tests.

The head shows an extended neck position. Training on two veins is possible. The head comes with two skin covers. Both veins and skin are available as replacement parts.

Item No. VET4620



Replacement Parts:

Skin	Vessel
Item No. VET4620A	Item No. VET4620B



K9 Cricothyrotomy Simulator

Cricothyrotomy places high demands on the skills of the practitioner and can have serious consequences for dogs if not practiced properly. Our simulator enables **regular training of lifelike cricothyrotomies** without risk. The handy trainer has a **larynx with interchangeable conic ligament and skin**. Both the skin and Lig. Conicum are designed so that both can be gradually rotated 360° and allow a variety of exercises until replacement is required. A special feature of our K9 Cricothyrotomy Simulator is the blood-filled pouch placed between the skin and ligament, which allows blood to escape during the incision and makes further work more difficult. In addition to lifelike anatomy and a realistic feel, our simulator offers an excellent price/performance ratio and high cost-effectiveness.

Item No. VET4720



Canine Intubation Head

This realistic training phantom is ideal for practicing the procedure and techniques involved in endotracheal intubation. The tongue is flexible. The teeth are made of hard plastic, so a tooth spreader can also be used. Epiglottis and soft palate are present. The dog's head is mounted on a base. The base is designed in such a way that you can intubate in upright as well as in a lying (supine) position. The stand also offers a success check if the intubation is carried out correctly. A clamp included in the scope of delivery offers a firm stand.

Item No. VET4600



Canine Head Vascular Access Simulator

The Canine Head Vascular Access Simulator allows for realistic training of jugular blood draws and catheter insertion in small animals. It features proper head positioning and highly realistic simulated skin and vein materials. Both components are replaceable for cost-effective, repeated use. For added challenge, the simulator includes two Vein Cushions to position the vein at different depths.

Item No. SRE0620

Replacement Parts:

Skin	Canine Head Vascular
Item No. SRE0620-1	Item No. SRE0620-2



Educational Features:

- + Training to locate the urethral opening in female dogs
- + Simulation of resistance during catheter insertion
- + Fluid flow response when catheter is correctly placed in the bladder
- + Perirectum examination training

**Cathy
Female Dog Catheterization Simulator**

The simulator is designed for educational and training purposes in the correct technique of catheterization of female dog. The device realistically simulates the anatomical structure of the urogenital tract, including the vagina, urethra, and bladder. The simulator shows the back part of a medium-sized dog breed. The dimensions of the simulator are about 23 cm high, 27 cm wide and 31 cm deep.

Item No. VET4690



Canine Rectal Exam Task Trainer

Providing veterinary medical students and technicians with a realistic animal tissue analogue to practice the common clinical skill of urogenital rectal exam.

A modular clinical physical exam skills model with quickly interchangeable prostate/urethra, rectal, and lymphatic units to accurately assess canine genitourinary rectal exam. Learners can improve their skills and validate competency on a realistic silicone model well before attempting these skills on a real patient, thus improving confidence in technique and reducing negative patient outcomes.

Item No. VET4650

6 different urethra and prostate models:

- + Normal female
- + Female urinary stone
- + Normal neutered male
- + Male urinary stone
- + Assymetric soft hypertrophic prostate
- + Asymetric rigid hypertrophic prostate



Canine Neuter Simulator

This Canine Neuter Simulator lets students practice neutering repeatedly using replaceable kits. It has a reusable base with a raised ridge and urethra tube for realistic palpation. Replaceable skin and testes include simulated vessels and a pouch layer. With lubrication, the testes can be positioned for prescrotal access and removed by open or closed technique. The skin incision can be closed afterward.

Item No. SRE0630

Replacement Parts:
Skin and Testicles
Item No. SRE0630-1



Dogs castration - training model

This is a simulation model for perfecting castration surgery in dogs. It is possible to simulate skin incision, fascia incision, ligation of spermatic cord and arteries and veins, removal of testicles and suturing. Both prescrotal and scrotal incision is possible. The model is based on a cartridge where only the contents can be replaced while the body remains the same, resulting in cost savings.

Item No. VET4530



Canine Echocardiography Kit

This advanced educational kit includes 15 full-colour, 3D-printed canine heart slices, precisely replicating anatomical views from real plastinated hearts, aligned with standard echocardiographic planes. A 3D-printed ultrasound probe with integrated laser allows users to simulate typical ultrasound projections onto a full heart replica. The kit is complemented by an online platform – www.discoverechocardiography.com – featuring echocardiograms, probe tutorials, animated heartbeat visuals, and an anatomical atlas. All content is accessible via QR code. Ideal for veterinary students, educators, and professionals in canine cardiology and anatomy.

Item No. VET4830



CT and X-ray Imaging:

- + Realistic simulation of a dog abdomen without contrast agent
- + Authentic representation of bones and soft tissues with realistic CT values at 120 kVp
- + Air spaces filled with cellulose polymer composite (~ -80 Hounsfield units)
- + CT value calibration adjustable for other tube voltages (e.g., 100 kVp)
- + Provides realistic tissue contrast for X-ray imaging



Dog phantom for CT and X-ray

Item No. VET14000

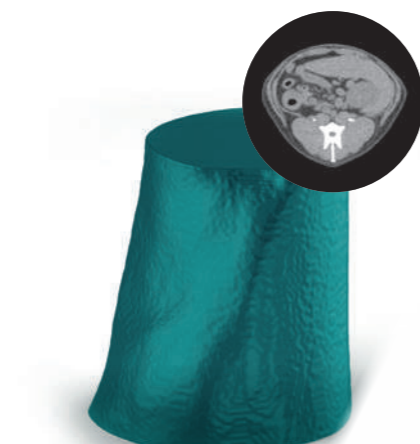
Dog's head Phantom for CT and X-ray

Item No. VET14010



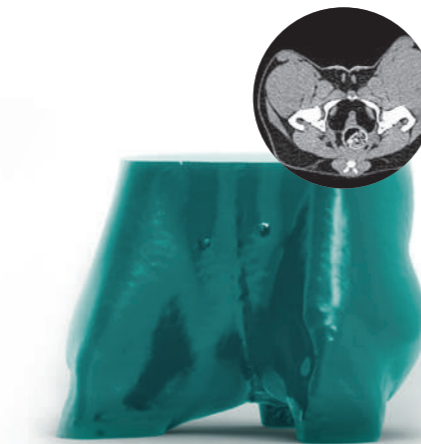
Dog Abdomen Phantom for CT and X-ray

Item No. VET14020



Dog pelvis phantom for CT and X-ray

Item No. VET14030



Exercise model - inserts included:

- + Normal Anatomy / Cystocentesis
- + Bladder stones
- + Bladder cancer
- + Inflammation of the bladder (cystitis)

Ultrasound trainer dog bladder

This training model of the lower body of a medium-sized dog provides comprehensive training in ultrasound examination of the canine bladder. Four different inserts cover the major procedures/diagnoses, allowing training in

diagnostic skills. The conditions usually have similar symptoms, so ultrasound examination is useful to obtain the actual diagnosis. Externally identical inserts require diagnostic skills to identify pathology.

Item No. VET4640

SonoEZ ultrasound trainer Dog kidney

This ultrasound trainer is used for practising the biopsy of a dog's kidney. Students can practise removing conspicuously altered cells by puncturing the medium-sized tumour it contains.

The model can also be used to familiarise students with the anatomy of the kidney.

Item No. SEZ-KD



Lillie
Canine Ultrasound Phantom Training Kit

This kit is the perfect set of starter tools for anyone learning to hone the essential fine motor skills necessary for developing great abdominal ultrasound techniques. Essential. Ethical. Sustainable. High-quality veterinary ultrasound training.

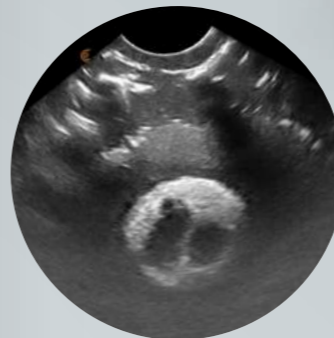
The 'Skills' phantom block contains the following: spiral structure, anechoic tortuous 'vessel', echogenic ring, and a hyperechoic nodule with hypoechoic cavity; to identify and assess.

The 'Renal FNA Phantom' is designed for needling - enabling the safe practice of ultrasound-guided needle placement.

Item No. VET4850

Lillie contains the following anatomical tissue-mimicking structures:

- + heart, ribs and lung,
- + liver, gallbladder, spleen, pancreas
- + kidneys and adrenal glands, urinary bladder, stomach, duodenum, ileum, colon
- + aorta and caudal vena cava



Feline



Acupuncture cat

Acupuncture figure of the cat with representation of the acupuncture points, musculature and internal organs. Size: 19 cm.

Item No. 2055



Cat Skull (Felis catus, replica)

Replica of a cat skull (Felis catus). Length: appr. 9.7 cm.

Item No. VET3090



Skull, wild cat (Felis silvestris)

High quality skull reproduction. 2 parts: Lower jaw removable. Skull length appr. 9.7 cm.

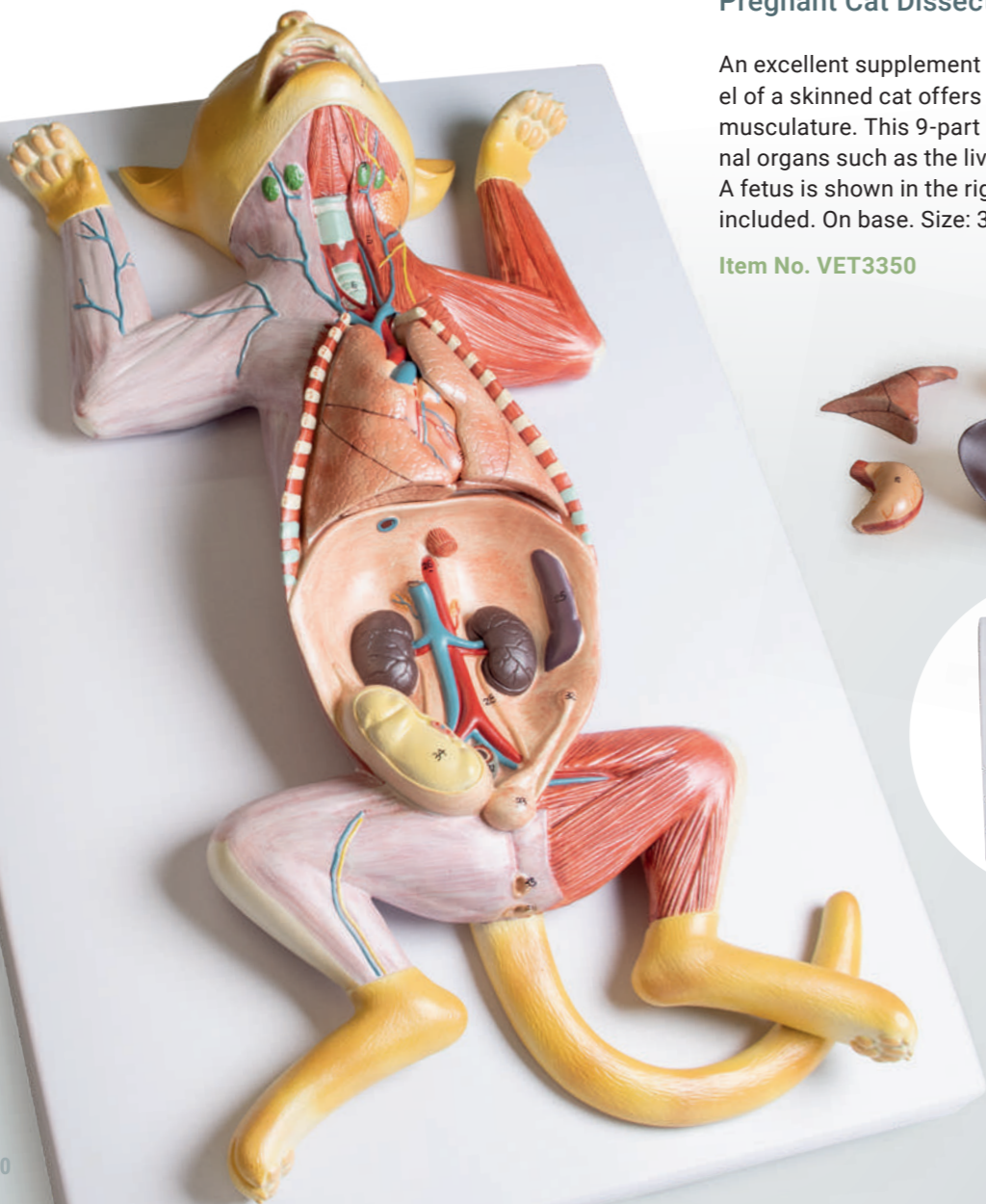
Item No. VET2060



Pregnant Cat Dissection Model

An excellent supplement to hands-on dissection, this model of a skinned cat offers easy visualization of superficial musculature. This 9-part model includes removable internal organs such as the liver, heart, lungs, and stomach. A fetus is shown in the right uterine horn. Numbered key included. On base. Size: 39 x 53 x 17.8 cm.

Item No. VET3350



CaPpeR Feline CPR Manikin

Our feline CPR manikin, is designed for training purposes to teach individuals how to perform cardiopulmonary resuscitation (CPR) techniques on cats. CaPpeR allows trainees to practice proper CPR techniques, including chest compressions and rescue breaths, in a controlled environment. This training possibility ensures that veterinary professionals can respond effectively in emergency situations and potentially save a cat's life. A femoral pulse check is also possible. CaPpeR comes with 100pcs replacement airways.

Item No. VET4880

Replacement: Lungbags, 100 pcs
Item No. VET4880A



Fluffy Feline CPR Manikin

The feline counterpart of Jerry, Fluffy has realistic working lungs and an artificial pulse. Students learn to perform feline compressions and mouth-to-snout resuscitation. It is also designed to splint and allow bandaging. Parts can be cleaned and are disposable. Accessories include a carrying case and 5 disposable lungs. Face shields are sold separately.

Item No. VET4100



Fluffy Replacement Parts:

Lungs, pack of 24pcs
Item No. VET4100A

Lungs, pack of 72pcs
Item No. VET4100B

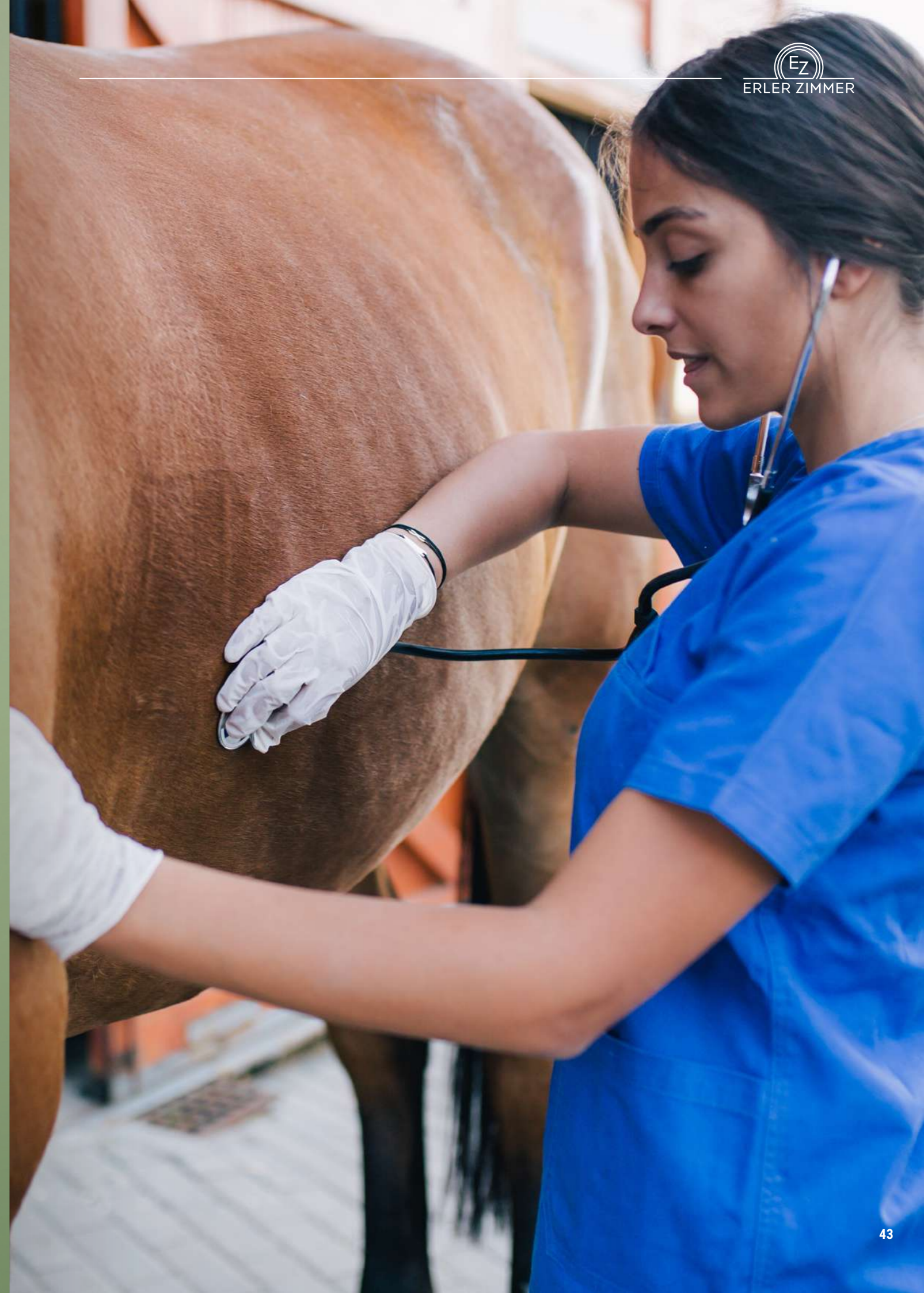
Fluffy Critical Care

Like its canine counterpart Critical Care Jerry, Critical Care Fluffy is a life-like, full-size cat manikin with trachea, oesophagus, epiglottis, tongue, movable jaw and functioning lungs. It is suitable for cardiopulmonary resuscitation and for practicing fixation, dressing techniques and venipuncture. The scope of delivery includes a carrying bag, training blood, IV reservoir and holder, five disposable lungs, an endotracheal tube and a syringe.

Item No. VET4110



Equine



Horse Front Leg with Scapula

We include the scapula, humerus, forearm (fused radius and ulna), cannon bone and foot. The foot consists of the long pastern bone (or first phalanx), the short pastern bone (or second phalanx) and the coffin bone (or third phalanx). The coffin bone is enclosed by the hoof (not included). Height: 154 cm.

Item No. VET4370

articulated on Base

2 parts

Horse Skull

The large and slender horse skull has long, broad, tapering nasals. At the front of the mouth are large incisors, designed for cropping grass. At the back of the mouth are six large, squared molars on either side of the maxilla and the mandible. The area between the incisors and the molars is called the bar. In that space sits a canine tooth (not present in all horses). The eyes sit back far on the head, typical of grazing animals.

Item No. VET4350

Horse foot, flexible

The foot consists of the long pastern bone (or first phalanx), the short pastern bone (or second phalanx) and the coffin bone (or third phalanx). The coffin bone is normally enclosed by the hoof (not included). Not shown are Ligaments, tendons, cushions and cartilage that contribute to the complicated structure of the horse's foot.

Item No. VET4360

Horse (mare) model

One side of the model presents the external anatomy of the animal, while the other presents the muscular system. The model is divided into two parts in the sagittal plane, which allows to present the internal anatomy of gastrointestinal, reproductive and excretory systems.

Item No. VET3330

The model can be disassembled into 16 parts:

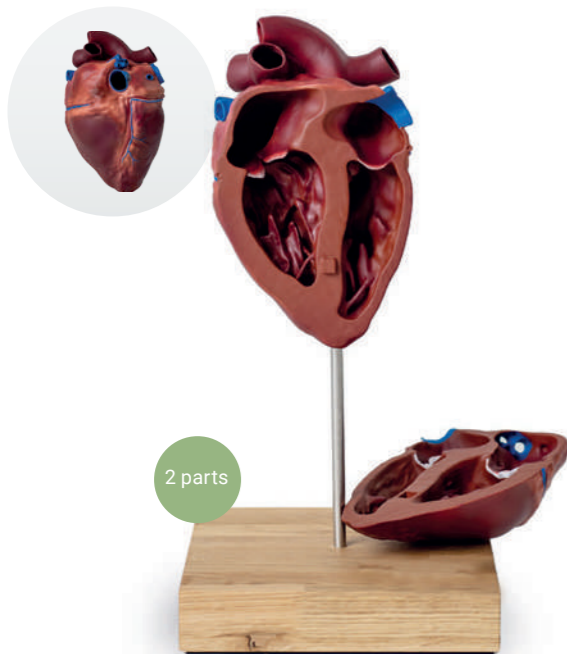
- + Right side of the head (outside)
- + Left side of the head (muscles)
- + Right side of the trunk (outside)
- + Left side of the trunk (muscles)
- + Left front leg
- + Right gluteal muscle
- + Heart (2 parts)
- + Left lung
- + Stomach (2 parts)
- + Small intestine
- + Large intestine
- + Liver
- + Left kidney
- + Spleen

1/3 natural-size

Horse heart model

A scaled-down hard plastic model of a horse's heart, showing accurate anatomy with 2 atria, ventricles, and main blood vessel openings.

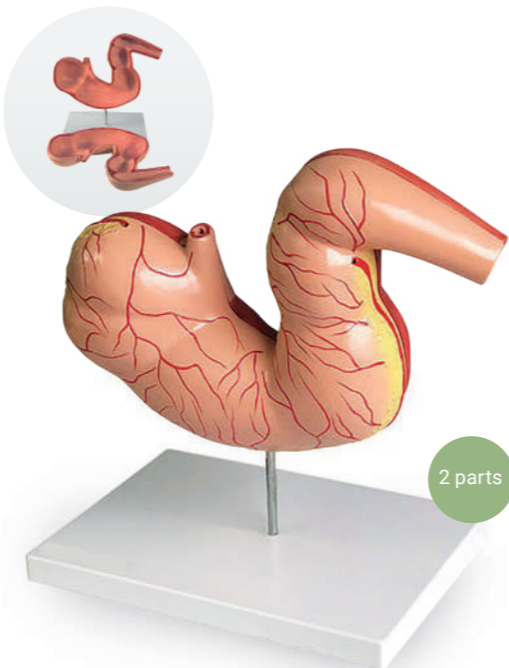
Item No. VET1510



Horse stomach model

A realistic model of a horse's stomach. It is divided into two parts, each of which represents the internal and external structures of the horse's stomach structure.

Item No. VET1380



Acupuncture horse

Acupuncture figure of the horse with representation of the acupuncture points, musculature and internal organs. Size: 25 cm.

Item No. 2058



Comparative model of the liver structure of pig, cattle, horse

Comparative model of liver structure of livestock. The individual models are made of hard material to a smaller size.

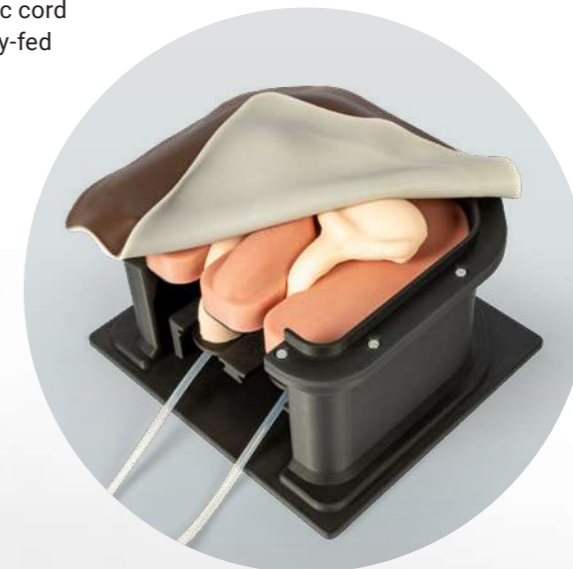
Item No. VET1530



Equine Castration Surgical Simulator

The Equine Castration Surgical Simulator is a highly realistic training model designed to teach and assess the complete surgical procedure of closed equine castration in a safe, repeatable, and controlled environment. The model features consumable fluid-filled silicone testicle and spermatic cord modules, a tissue-analogue housing, and a gravity-fed simulated blood system to validate hemostasis. Veterinary students, technicians, and surgeons can practice every step – from skin incision to ligature application and emasculator use – while receiving immediate feedback on surgical technique. The quick-deploy retention system allows for rapid module changes between users, enabling efficient training for large groups.

Item No. VET4810



Replacement Parts:

Testicles, 1 Pair
Item No. VET4810A



Skin
Item No. VET4810B





Equine Simulator

The Advanced Equine Simulator (in black) is the leading and most comprehensive equine simulator available. It has been designed to advance a comprehensive set of educational goals for the following procedures:



Product Benefits

- + Intramuscular Injections
- + Nasolacrimal Duct Flush
- + Placement of Subpalpebral Lavage System
- + Eye Nerve Blocks – Auriculopalpebral Nerve & Supraorbital Nerve
- + Teeth Nerve Blocks - Mental Nerve, Maxillary Nerve & Infraorbital Nerve
- + Blood draw from jugular
- + Jugular catheter insertion
- + Blood draw from deep facial artery
- + Blood draw from transverse facial vein
- + Transverse facial artery catheter insertion

Repetitive use of this product will help students develop the procedural skills and confidence necessary before their first live animal experience. Ships with initial supply of artificial blood powder and 1000ml IV bag. Designed by equine surgeon educators using innovative technologies, The Advanced Equine Simulator is engineered to provide the most anatomically correct and realistic simulated equine training experience available. The Advanced Equine Simulator delivers excellence in veterinary training.

Item No. SRE0651

Replacement Parts:

Vessels Equine
Item No. SRE0651-1



Equine skin
Item No. SRE0651-2



IM Injection Pad Equine
Item No. SRE0651-3



Bundle (Vessels, Blood, IV Bag)
Item No. SRE0651-4



The foot of a horse as model

Product Benefits:

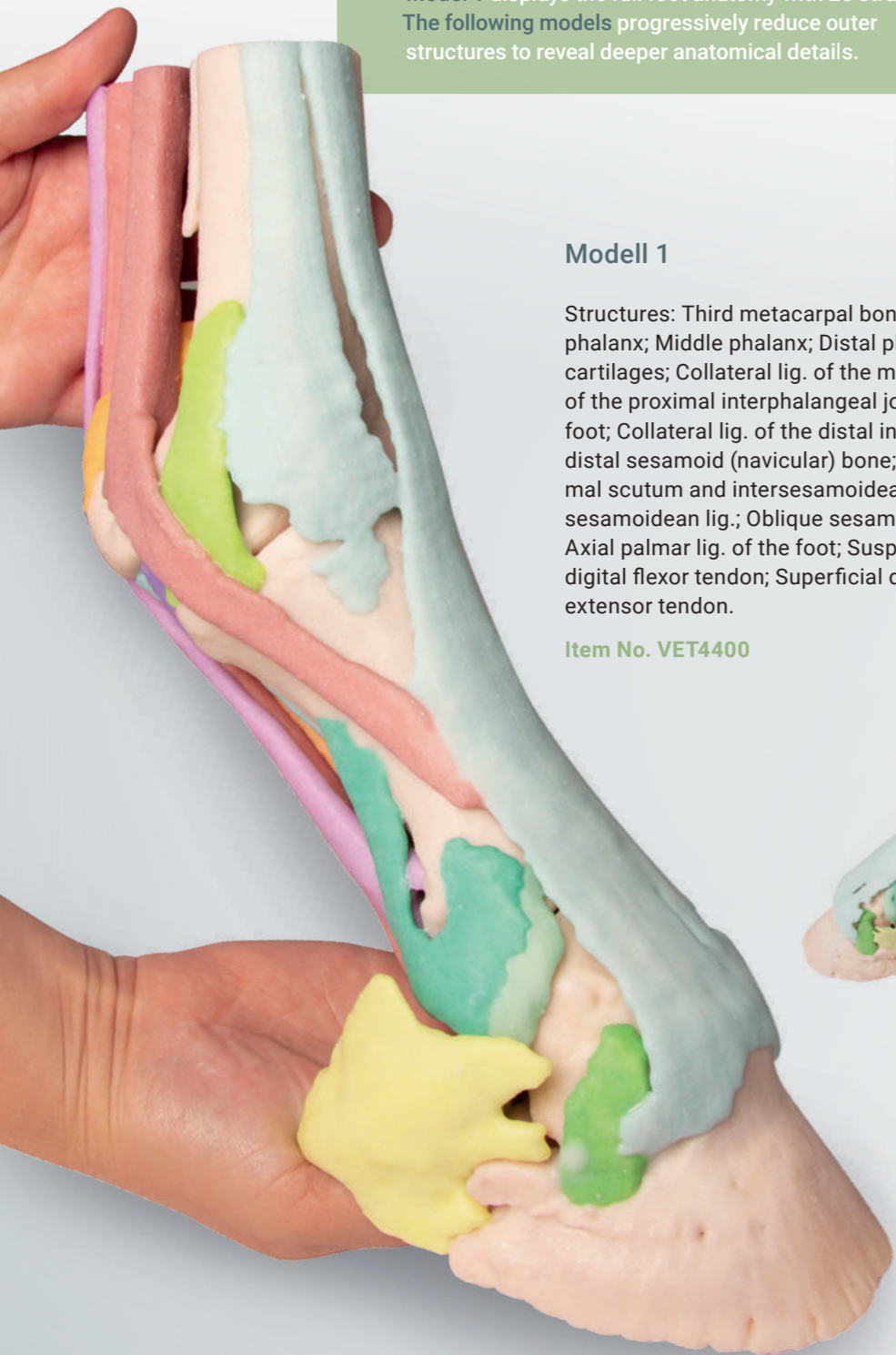
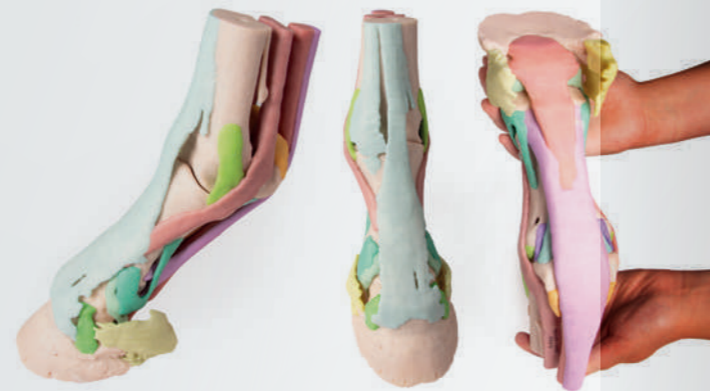
- + Life-size, anatomically accurate, from co-registered CT and MR data.
- + Full-color 3D print with individually colored anatomy.
- + Separate hoof capsule anchors the distal limb in stance.
- + The series consists of four models:
Model 1 displays the full foot anatomy with 25 structures.
The following models progressively reduce outer structures to reveal deeper anatomical details.



Modell 1

Structures: Third metacarpal bone; Proximal sesamoid bones; Proximal phalanx; Middle phalanx; Distal phalanx; Distal sesamoid bone ; Ungular cartilages; Collateral lig. of the metacarpophalangeal joint; Collateral lig. of the proximal interphalangeal joint and the abaxial palmar lig. of the foot; Collateral lig. of the distal interphalangeal joint; Collateral lig. of the distal sesamoid (navicular) bone; Distal sesamoidean impar lig.; Proximal scutum and intersesamoidean lig.; Cruciate sesamoidean lig.; Short sesamoidean lig.; Oblique sesamoidean lig.; Straight sesamoidean lig.; Axial palmar lig. of the foot; Suspensory lig. and extensor branches; Deep digital flexor tendon; Superficial digital flexor tendon; Common digital extensor tendon.

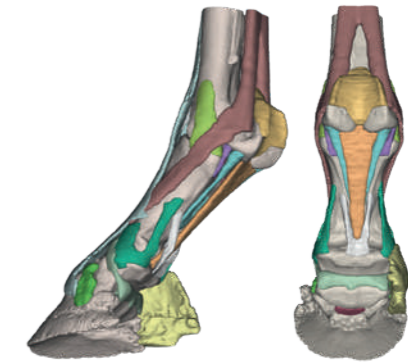
Item No. VET4400



Modell 2

As Model 1, however, this model shows the proximal sesamoidean ligaments, impar ligament and the collateral ligaments of the distal sesamoid (navicular) bone.

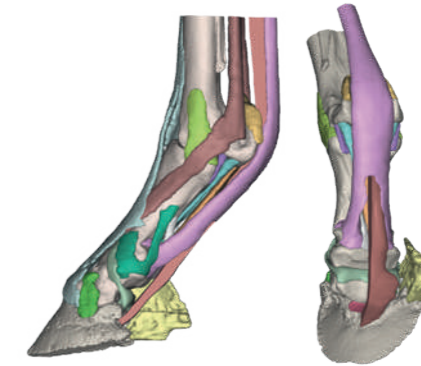
Item No. VET4410



Modell 3

Similar to Model 1, but this model, with the deep digital flexor tendon sectioned, shows the tendon's relationship to the distal sesamoid bone and the impar ligament. One ungular cartilage is absent to show the collateral ligaments of the distal sesamoid bone.

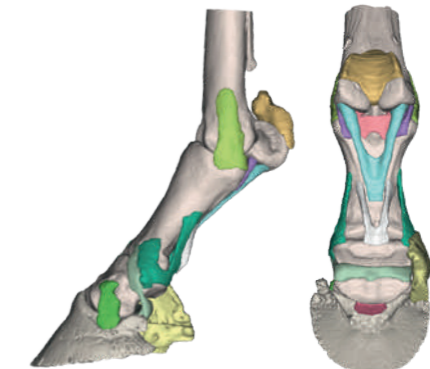
Item No. VET4420



Modell 4

This model, stripped of tendons and the suspensory ligament, shows the bones of the foot and their deep supporting ligaments.

Item No. VET4430

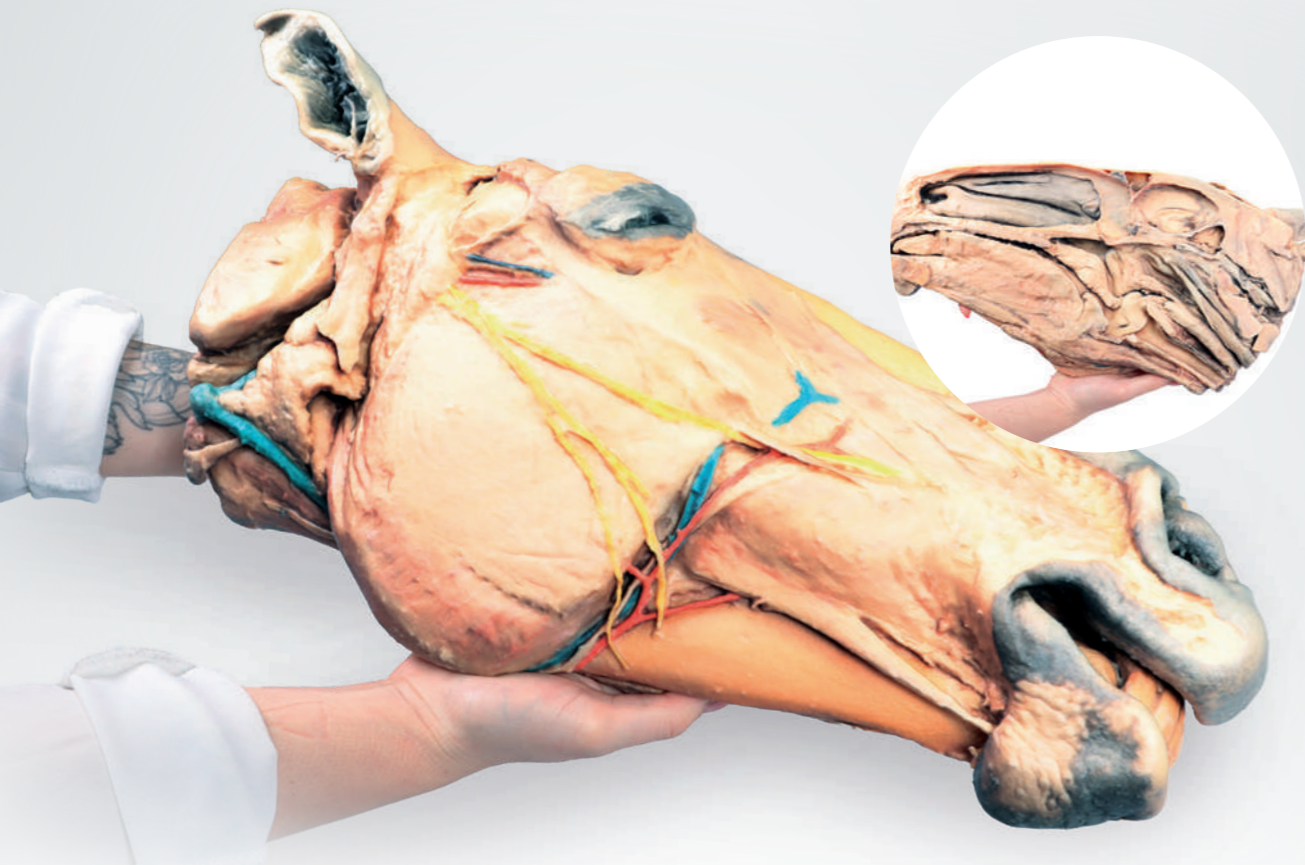


Hoof Capsule

The corresponding hoof capsule is separate and anchors the distal limb in the stance position.

Item No. VET4400-1





Horse sagittal half-head

This horse half-head shows a superficial dissection on the right lateral side and a sagittal section medially. The skin is removed laterally, except on the nostrils, lips, and external ear. The rostral dissection reveals facial expression muscles: levator nasolabialis, canine, levator labii superioris, zygomaticus, buccinator (buccal part), and depressor labii inferioris. Caudally, the masseter muscle, covered by its fascia, extends from the maxillary facial crest and shows the dorsal and ventral buccal branches of the facial nerve, ending as buccolabial branches. The facial artery, vein, and parotid duct lie in the facial notch. Dorsocaudally to the masseter are the transverse facial vessels and auriculotemporal nerve. The parotid-auricular muscle, parotid gland, and maxillary and linguofacial veins lie in the cervicofacial region.

Item No. VP10000

Horse (foal) pelvis dissection - ligaments

This specimen is focused on the sacroiliac joint, the two coxal bones (os coxae) are exposed in the dissection: Ilium, pubis and ischium, together with lumbar vertebrae and sacrum. At the sacroiliac joint, the dorsal sacroiliac ligament can be identified. The broad sacrotuberous ligament of the pelvis extends from the lateral sacral crest to the sciatic spine and ischial tuberosity. The greater sciatic foramen occupied by the lumbosacral trunk. From the vertebral bodies and part of the transverse processes of the lumbar vertebrae, the tendons of insertion of the psoas minor muscles are identified. The ventral longitudinal ligament connects the ventral aspect of most cranial lumbar vertebral bodies.

Item No. VP10020

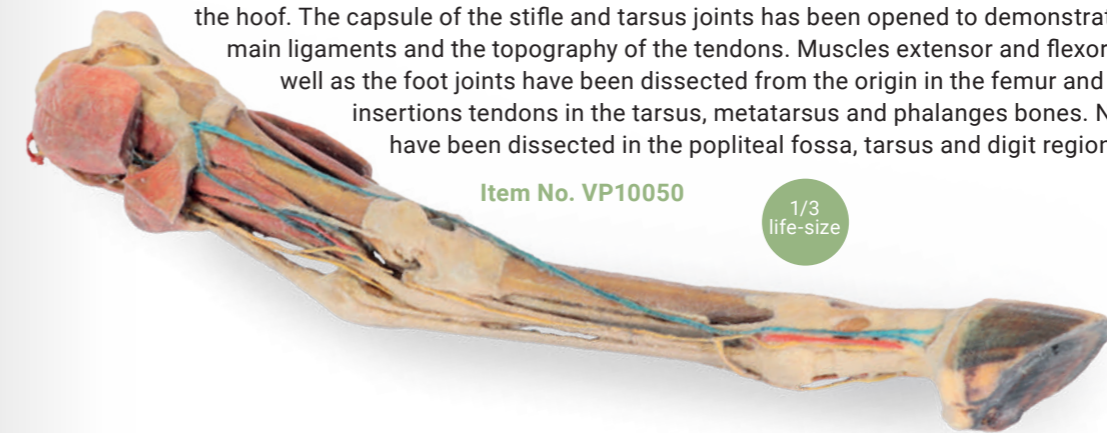


Horse hindlimb - muscles, tendons, ligaments, vessels and nerves distal to the stifle

This specimen preserves a superficial dissection of the lower limb musculature from the mid thigh to the hoof. The capsule of the stifle and tarsus joints has been opened to demonstrate the menisci, the main ligaments and the topography of the tendons. Muscles extensor and flexor of these joints as well as the foot joints have been dissected from the origin in the femur and tibia bones, to the insertions tendons in the tarsus, metatarsus and phalanges bones. Nerves and vessels have been dissected in the popliteal fossa, tarsus and digit regions.

Item No. VP10050

1/3 life-size

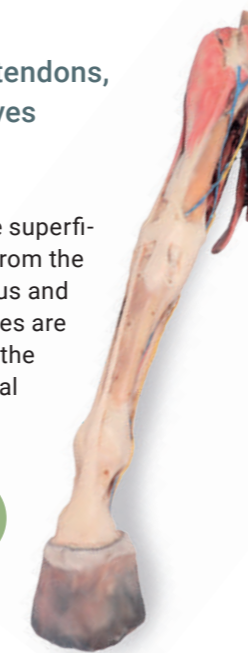


Horse forelimb - muscles, tendons, ligaments vessels and nerves distal to the stifle

This specimen demonstrates the superficial anatomy of a right forelimb from the elbow joint to the hoof. The carpus and digital extensor and flexor muscles are located in the forearm related to the pathway of the median and cubital nerves.

Item No. VP10010

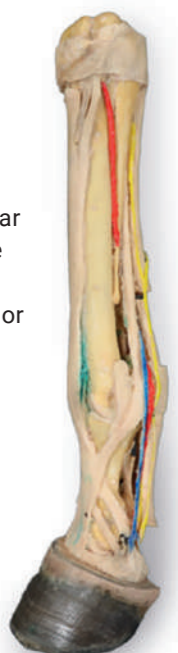
1/3 life-size



Horse foot - deep palmar dissection

This dissected left-foot specimen displays the plantar digital neurovascular bundle both sides of the flexor tendons. The two digital extensor tendons are identified in the dorsal aspect of the specimen.

Item No. VP10040



Horse foot - deep palmar dissection

This dissected right-foot specimen displays a mixture of the vascular, nervous, ligaments and tendons. The plantar digital neurovascular bundles both sides of the flexor tendons. The two digital extensor tendons are identified in the proximal dorsal aspect of the specimen.

Item No. VP10030

1/3 life-size



Horse stifle joint dissection

This specimen demonstrates the ligaments of the stifle joint with the leg in extension. In the anterior view, with the patella and the three patellar ligaments.

Item No. VP10015



Cow





Comparative model of the liver structure of pig, cattle, horse

Comparative model of liver structure of livestock. The individual models are made of hard material to a smaller size.

Item No. VET1530

Half-Carcass beef (bull) model

The model showing a beef half-carcass on a base. The individual parts of the model were divided according to the DLG classification - „simplified DLG cutting method“.

Item No. VET1370



The model is divided into 12 parts in total:

- + hind shank
- + round
- + loin
- + tenderloin
- + flank
- + plate
- + chuck
- + neck
- + fore shank
- + shoulder
- + brisket

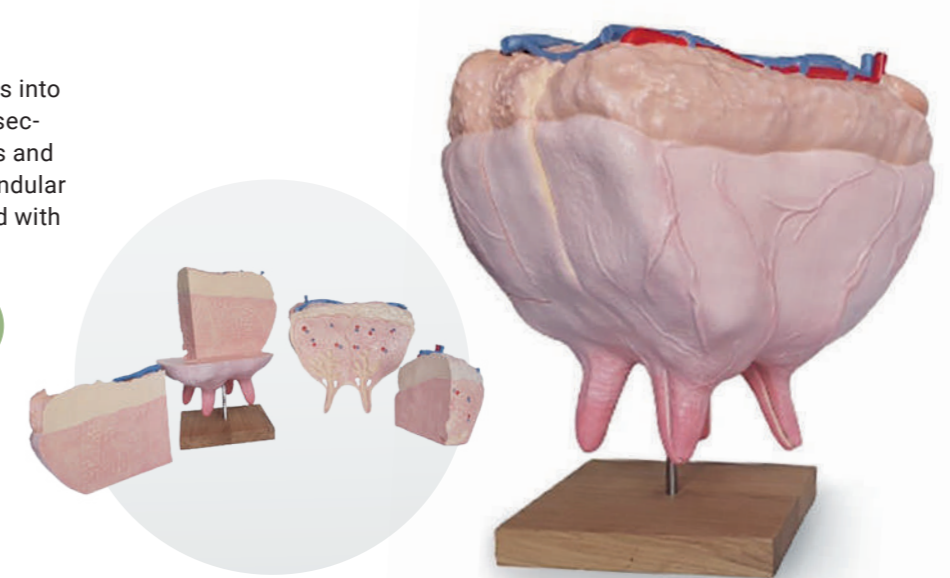


Udder of the Cow

The cow udder model separates into 4 parts in sagittal and vertical section, showing the arteries, veins and milk passages and the four glandular regions. Removable. On a stand with wooden base.

Item No. VET1360

natural-size

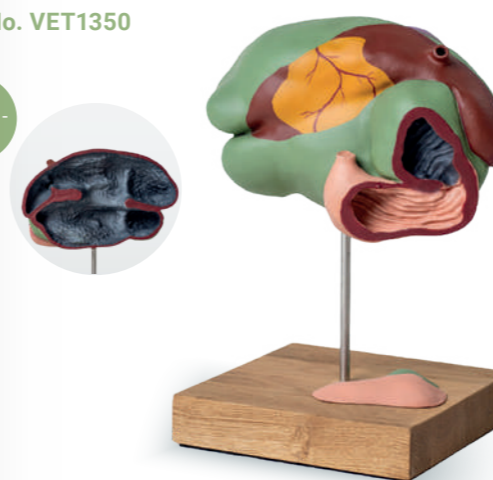


Cow stomach

Rumen and reticulum can be divided into two halves to show the relief of the mucous membrane of the stomach. Omasum and abomasum can be opened up. Separates into 3 parts.

Item No. VET1350

1/3 natural-size



Acupuncture cow

Acupuncture figure of the cow with representation of the acupuncture points, musculature and internal organs. Size: 15 cm

Item No. 2056



Bovine fetal Development set, 8 models

The realistic models depict cattle fetuses at various stages of development. The stages include the corpus luteum and fetus at 1, 2, 3, 5 + 7 months of age. All eight models have realistic functions, dimensions and design.

Specifications:

- 7 - 8 Month Model: 61 x 21 x 33cm
- 5 - 6 Month Model: 36 x 12 x 23cm
- 3 - 4 Month Model: 16 x 14,5 x 8cm
- 2 Month Model: 6,5 x 2,5 x 4cm
- 1 Month Model: 1,25 x 1 x 1,3cm

Item No. VET1600



Bovine model

One side of the model presents the external anatomy of the animal, while the other presents the muscular system. The model is divided into two parts in the sagittal plane, which allows to present the internal anatomy of gastrointestinal, reproductive and excretory systems.

Item No. VET3300

1/3 natural-size



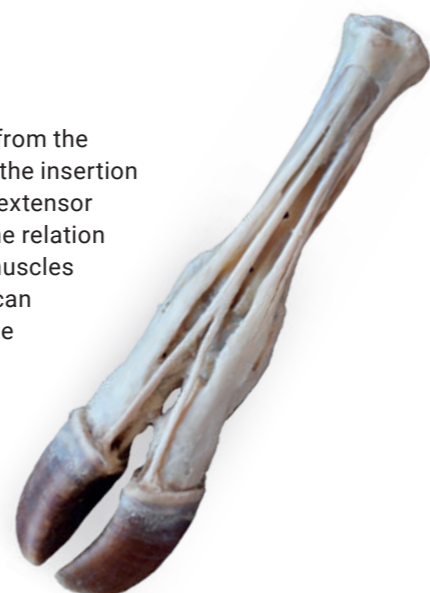
The model can be disassembled into 15 parts:

- + one limb
- + heart (2 pcs)
- + lung
- + small and large intestines
- + stomach (3 pcs)
- + kidney
- + uterus with an ovary (2 pcs)
- + liver
- + tail, half with the muscular system, half with the external anatomy.
- + When the internal organs are taken out, the model presents the muscular system of the thorax and the abdomen.

Ox foot - tendons and ligaments

This specimen records the anatomy of an ox's right foot from the metatarsus to the distal phalanges. In the dorsal aspect, the insertion of the tendons of the common, lateral and medial digital extensor muscles are the main structures. In the plantar aspect, the relation of the tendons of the superficial and deep digital flexor muscles with deep structures such as the interosseous ligament can be detected. Capsular and extra-capsular ligaments of the metatarsophalangeal and interphalangeal joints are also preserved.

Item No. VP11000



Advanced simulator for artificial insemination (AI) of the cow

The simulator represents the rear half of a female breeding cattle on a base with castors. It enables the training and observation of the palpation manipulation that is carried out during the insemination process and the examination per rectum.

Characteristics: The set contains a complete artificial reproductive system, an uterus in the oestrus and a handpiece. An interchangeable full-size representation of the reproductive system with characteristic anatomical structures, mounted in the correct anatomical position in the simulator structure, suspended in the pelvic cavity naturally imitates a natural suspension made of flexible materials, imitating them and offering a realistic treatment sensation of living Tissue - applies to the external elements (vulva) and internal (cervical). The internal organs of the model can be heated to natural temperature.

Item No. VET3400



Life size

Available as an option / spare part:

- Uterus in oestrus
- Standard cervix for easy AI procedure
- Cervix for difficult AI procedure
- Uterus at different stages of pregnancy
- Set with ovaries: small follicles, large follicles, corpus luteum, cyst
- Insemination gel
- Silicone vagina tube
- Rectum (removable bag)
- The posterior part of the reproductive system
- Tail



Bovine hoof bandage simulator

The dressing simulator for cattle hoofs offers the opportunity to learn the correct application of dressing materials and techniques. The cattle claw can be rotated on the tripod, allowing you to practice on a standing or lying cow. A table clamp is included and guarantees a secure attachment option.

Item No. VET4900

Sheep



Skull and horn Merino sheep ram (Ovis aries)

High quality skull reproduction.
Skull length appr. 29 cm,
Horn width appr. 60 cm.
Horns supplied loosely.
4 parts: Lower jaw removable.

Item No. VET2040



Skull, domestic sheep, female (Ovis aries)

High quality skull reproduction. Skull length appr. 23 cm.
2 parts: Lower jaw removable.

Item No. VET2030



1/3 natural-size

Sheep stomach model

A detailed model of a sheep's stomach. It consists of 2 parts that can be separated to show the internal structure. 2 parts.

Item No. VET1500



Sheep model

One side of the model presents the external anatomy of the animal, while the other presents the muscular system. The model is divided into two parts in the sagittal plane, which allows to present the internal anatomy of gastrointestinal, reproductive and excretory systems.

Item No. VET3310

The model can be disassembled into 12 parts:

- + 2 body halves, divisible in the sagittal section
- + stomach (2 pieces)
- + small and large intestine
- + heart (2 parts)
- + liver with spleen
- + one limb
- + lung
- + 2-part uterus (reproductive system)
- + rectum, bladder
- + excretory system



2/3 natural-size



Pig



Skull domestic pig (Sus scrofa domesticus)

High quality skull reproduction. Skull length appr. 36 cm. 2 parts: Lower jaw removable

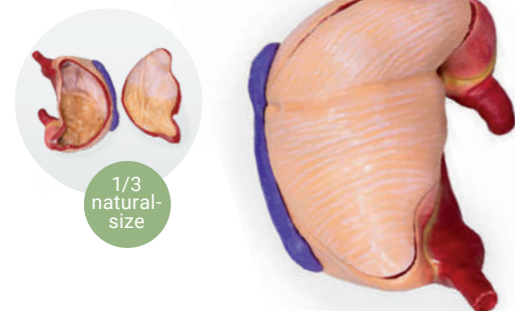
Item No. VET2035



Pig stomach model

A three times smaller, two-piece model of a pig stomach. It shows all the important anatomical structures. It can be separated in the middle to show the internal structure. 2 parts.

Item No. VET1540



Acupuncture pig

Acupuncture figure of the pig with representation of the acupuncture points, musculature and internal organs. Size: 13 cm

Item No. 2054



Comparative model of the liver structure of pig, cattle, horse

Comparative model of liver structure of livestock. The individual models are made of hard material to a smaller size.

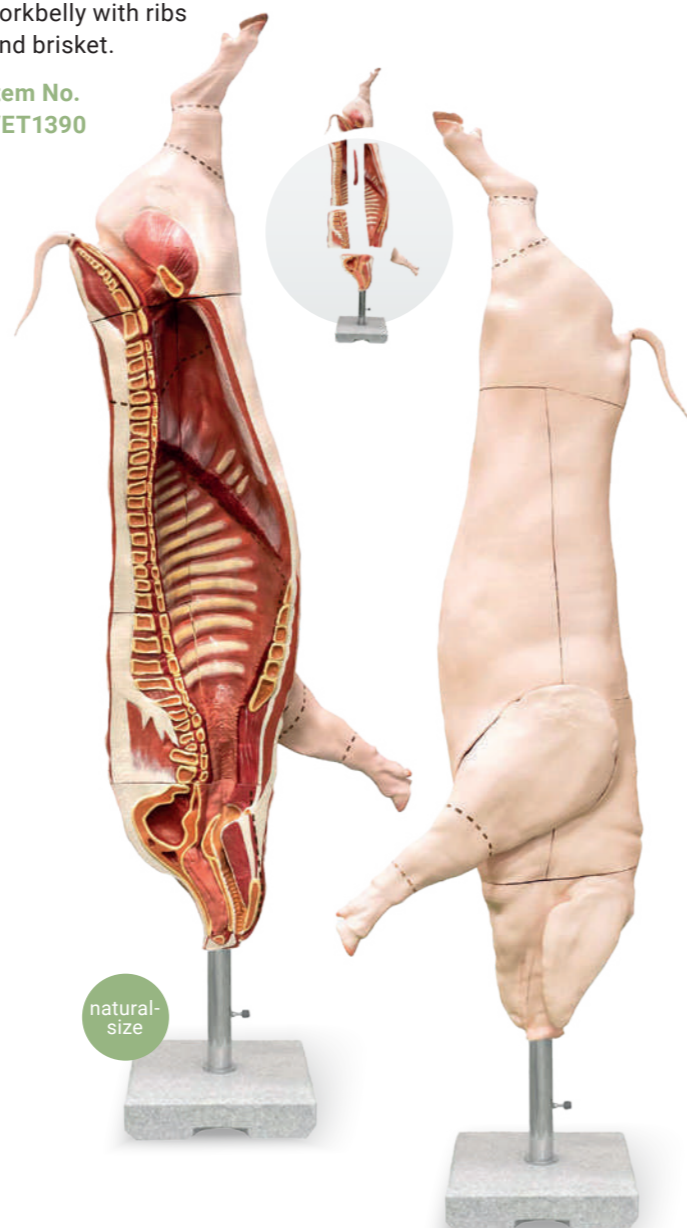
Item No. VET1530



Pork (pig) carcass model

This life-size model shows a pig half on a pedestal, which has been cut up using the simplified DLG method. 7 parts: head, shoulder with shank and foot, chine, tenderloin, ham with shank and foot, loin with champ and fatback, porkbelly with ribs and brisket.

Item No. VET1390



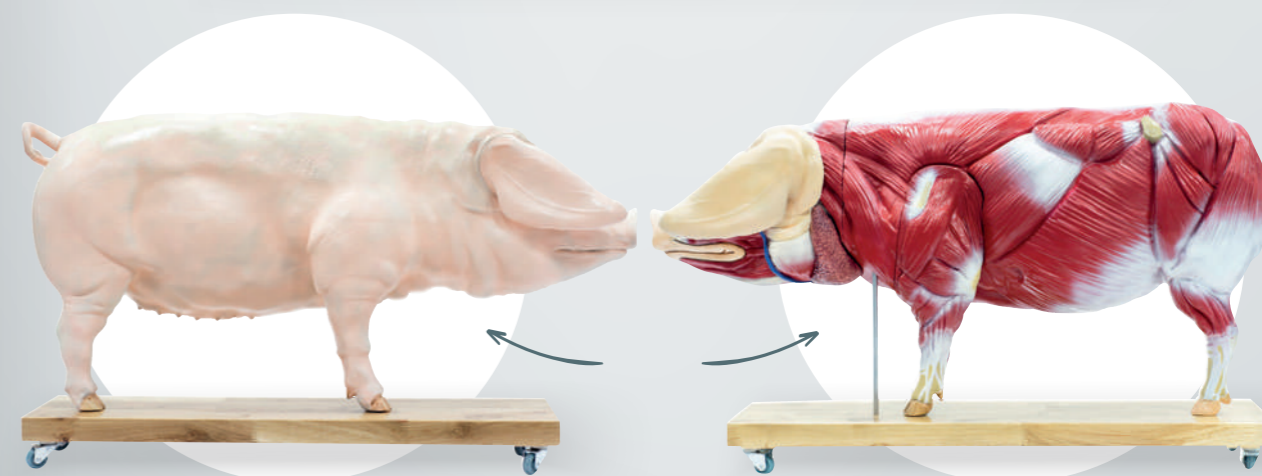
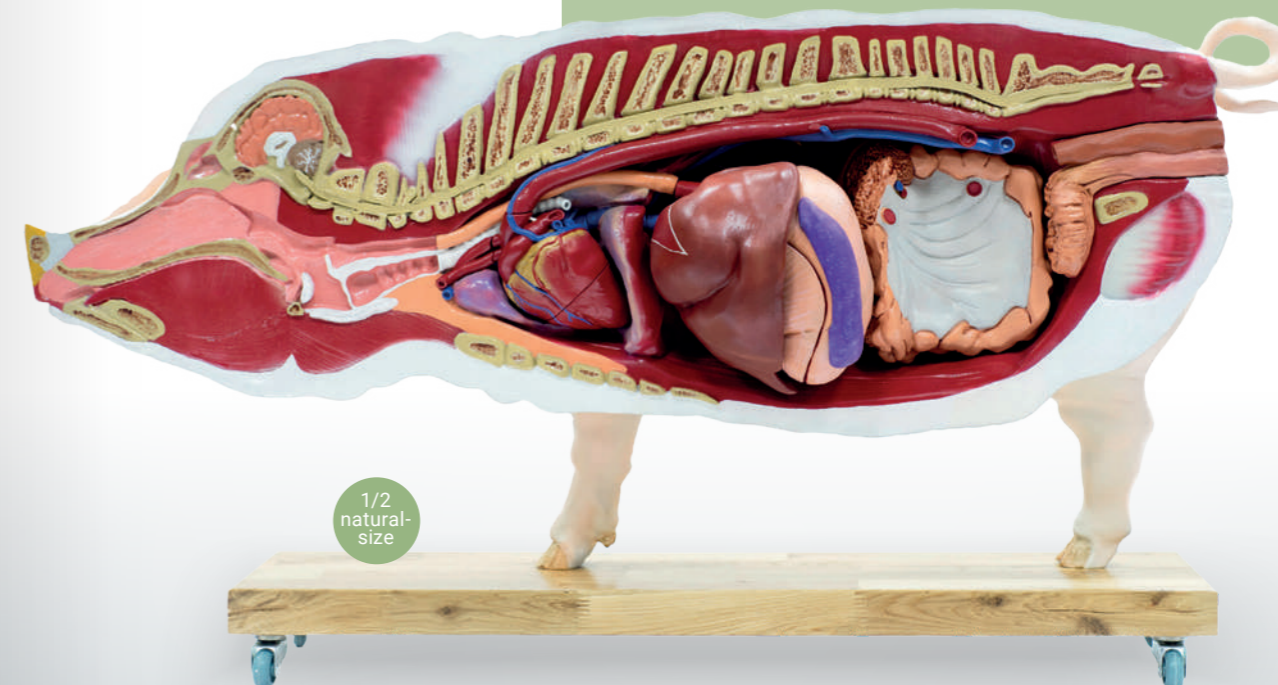
Pig model

One side of the model presents the external anatomy of the animal, while the other presents the muscular system. The model is divided into two parts in the sagittal plane, which allows to present the internal anatomy of gastrointestinal, reproductive and excretory systems.

Item No. VET3320

The model can be disassembled into 20 parts:

- + right half of the body
- + left half of the body
- + half of the head
- + ear cartilage
- + large intestine
- + small intestine
- + left front leg
- + liver (2-parts)
- + heart (2-parts)
- + kidney
- + adrenal gland
- + spleen
- + lung (2 parts)
- + tail
- + stomach (2 parts)
- + parotid gland
- + half of the uterus



Mouse & Rat



Mimicky Mouse

Experimental procedure Simulator. Handling. Restraint. Physical assessment. Oral administration. Intravenous administration.

Item No. VET4220

Replacement Tail

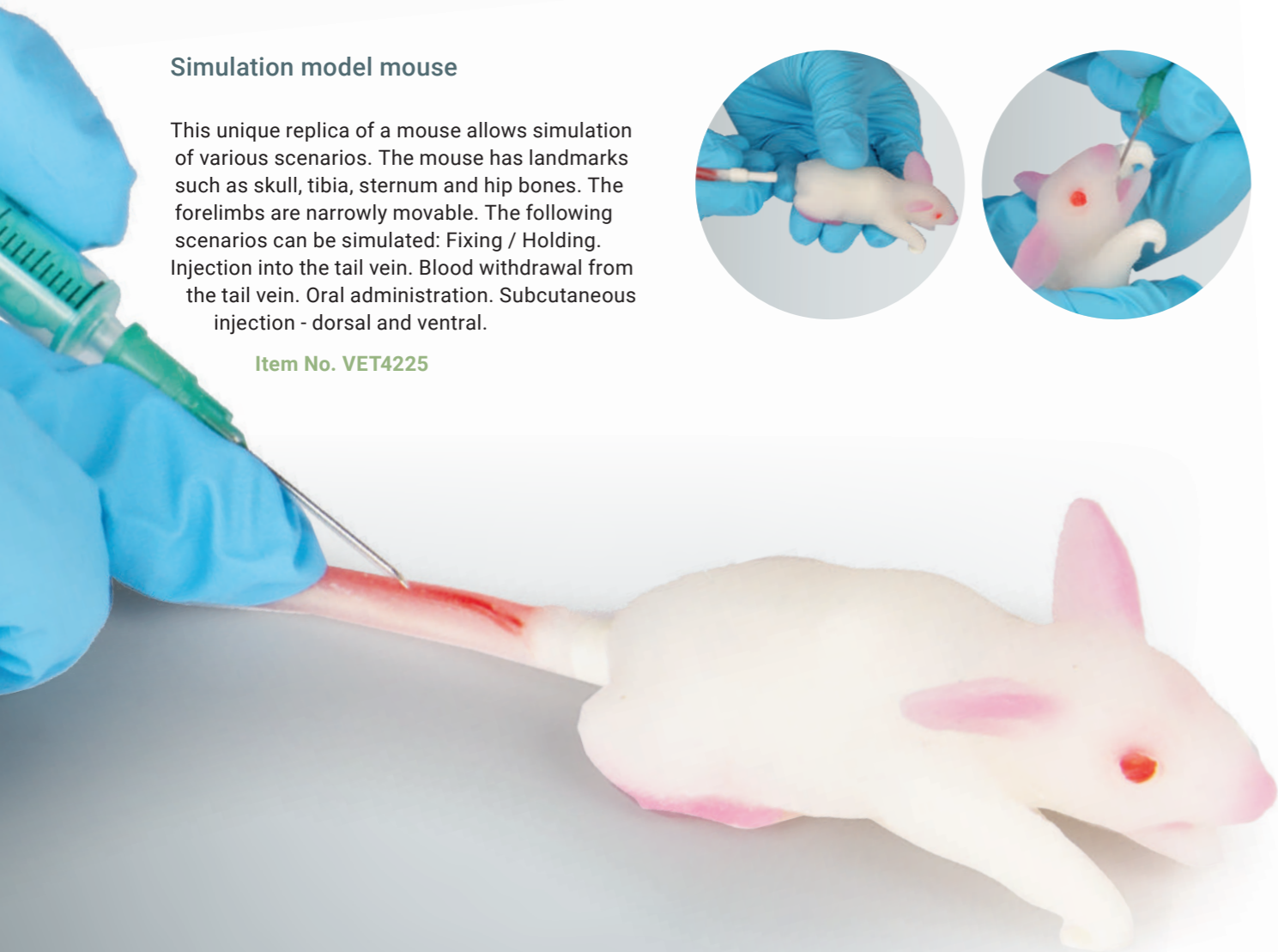
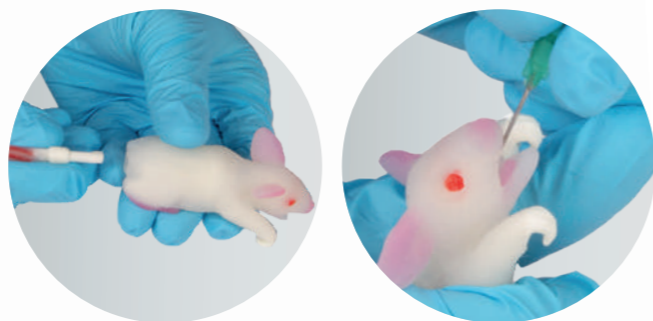
Item No. VET4220A



Simulation model mouse

This unique replica of a mouse allows simulation of various scenarios. The mouse has landmarks such as skull, tibia, sternum and hip bones. The forelimbs are narrowly movable. The following scenarios can be simulated: Fixing / Holding. Injection into the tail vein. Blood withdrawal from the tail vein. Oral administration. Subcutaneous injection - dorsal and ventral.

Item No. VET4225



Natsume Rat

We hope to contribute to a reduction in the number of experimental animals used, and Natsume Rat is used as an alternative to animal experiments in medical, pharmaceutical, and veterinary education and the education for sophisticating animal experiment techniques.

Item No. VET4230

Replacement Tail

Item No. VET4230A



Skills that can be practiced:

- + Retention / Holding
- + Oral administration
- + Endotracheal intubation
- + Tail vein injection
- + Blood collection through tail vein

Squeekums

The Squeekums Rat manikin allows students, lab technicians, and handlers to learn how to confidently handle and safely manage lab rodents. The tail of this amazing rodent model can be conveniently detached and disposed of, while also having the capability of IV access at the caudal vein site. Tiny replaceable ears help students learn ear tagging procedures. The model is fully articulated and extremely realistic. Head, feet, and limbs move in a natural manner. Squeekums comes with its own protective case, IV accessories, artificial blood, and instructions.

Item No. VET4210

Replacement Tail

Item No. VET4210A

Replacement Ears

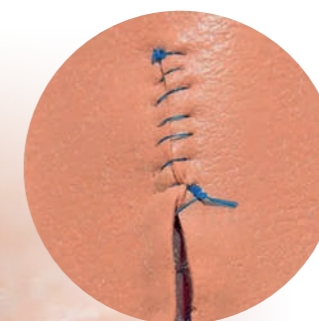
Item No. VET4210B



Simulated Rat/Mouse Tissue with Real Layer Technology

This Rat/Mouse Suture Pad is designed to mimic the first 5 layers of the abdominal wall of a rat or mouse. The layers replicate the Epidermis, Subcutaneous, first Fascia layer, Muscle, and second Fascia layer. Each layer is uniquely formulated to replicate its respective real-life tissue layer, the textures and relative body wall strength of a lab animal.

Item No. SRE0200LLARM



Product benefits:

- + Realistic puncture of the lateral tail vein
- + Training for intravenous injections
- + Can be filled with water or artificial blood
- + Realistic feel for practical learning
- + Includes holder and 5 ml syringe



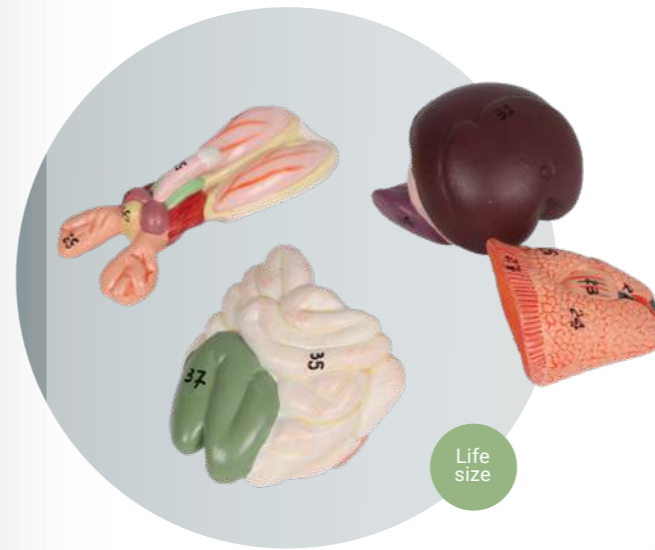
Rat Tail Vein Training Simulator

This simulation model allows trainees and professionals to **practise puncturing the lateral tail vein**, as well as blood collection and intravenous injections in rats in a realistic manner – safely, repeatedly and practically.

The model has been specially optimised to replicate the realistic feel and anatomy of a rat's tail, giving learners an authentic feel for the puncture. The vein can be filled with water or artificial blood to simulate different training scenarios.

Item No. VET4250

Rat replacement tail
Item No. VET4250A



Rat Dissection Model

This model is an important tool to study zoology, providing a realistic reproduction the anatomy of the rat. The ventral dissection exposes heart and lungs, liver, intestine, male and female genital systems. The internal organs are removable for closer examination. 6-parts.

Item No. VET0821



More animals



Skull, Bat (Chiroptera sp.)

High quality skull reproduction. Skull length appr. 1.5 cm.

Item No. VET2085



Guinea pig skullt

High quality skull reproduction. Skull length appr. 7 cm.

Item No. VET3095



Skull, Wolf (Canis lupus), Alaskan Wolf

High quality skull reproduction. Skull length appr. 28.5 cm. 2 parts: Lower jaw removable.

Item No. VET2025



Skull, domestic goose (Anser spec.)

High quality skull reproduction. Skull length appr. 23 cm. 2 parts: Lower jaw removable.

Item No. VET2065



Skull Hedgehog (Erinaceus europaeus)

High quality skull reproduction. Skull length appr. 5.3 cm. 2 parts: Lower jaw removable.

Item No. VET2075



Skull, Raven (Corvus corax)

High quality skull reproduction. Skull length appr. 12 cm. 2 parts: Lower jaw removable.

Item No. VET2055



Skull, tortoise (Testudo sp.)

High quality skull reproduction. Skull length appr. 4.5 cm.

Item No. VET2080



Skull, Turkey (Meleagris gallopavo)

High quality skull reproduction. Skull length appr. 11cm.

Item No. VET2070



Endotracheal intubation of the snake

Our realistic snake simulator has a detailed reproduction of the mouth cavity. The glottis and trachea are opened.

The endotracheal intubation processes can be practiced on the simulator. It is possible to insert tubes or alternative ventilation aids into the trachea. The snake has a heart marking "H" and a stomach marking "S" on the body as an indication.

Item No. VET4800



Model of the Worker Bee, 25x enlarged, 3 parts (A. mellisica)

Detailed model of a bee at 25x magnification. Our new bee model is supplied with a base. This bee anatomical model shows an adult bee cut in mid-section to present the internal structure of the insect. In the model, one leg is detachable, so you can demonstrate the basket with collected pollen. Additionally, the honey sac attached to a piece of intestine is removable to demonstrate the sting and venom. The presented bee model consists of a total of 3 parts.

Item No. VET1520



Anatomical Charts



Anatomical Charts

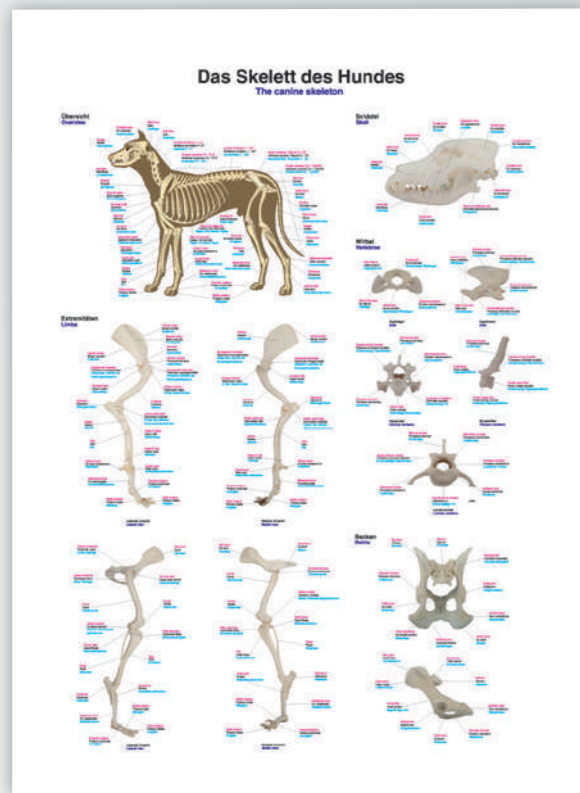
The Erler-Zimmer charts make anatomy understandable for everyone. The graphics have the medical and graphic level of an anatomy atlas and also offer the opportunity to learn medical terms in German, Latin and English. But the charts are not only a first-class learning aid, they also enhance the appearance of any practice, clinic or doctor's room as a decorative object.

Chart 50 x 70 cm

+ Material: art paper, with rods and hanger

Chart 70 x 100 cm

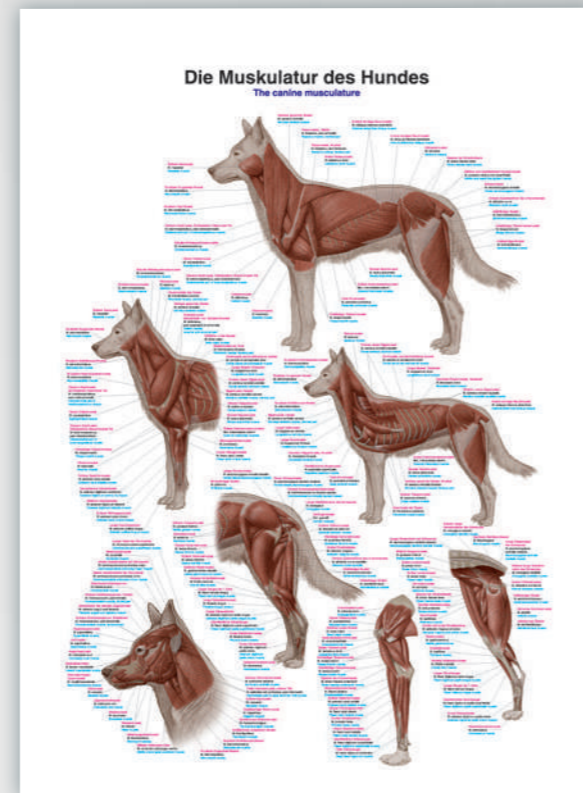
+ Material: plastic, with metal frame and hanger



The canine skeleton

Anatomical chart in German, Latin, English.

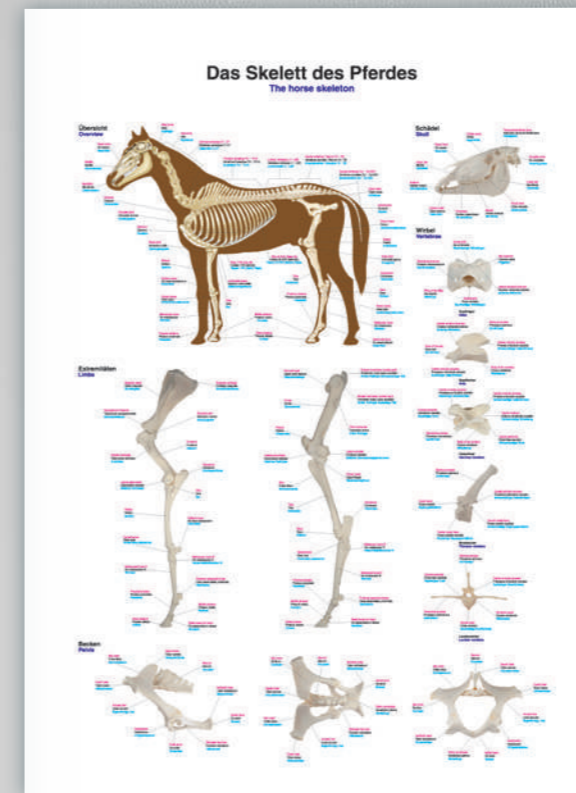
50 x 70 cm 70 x 100 cm
 Item No. VL600 Item No. VL100



The canine musculature

Anatomical chart in German, Latin, English.

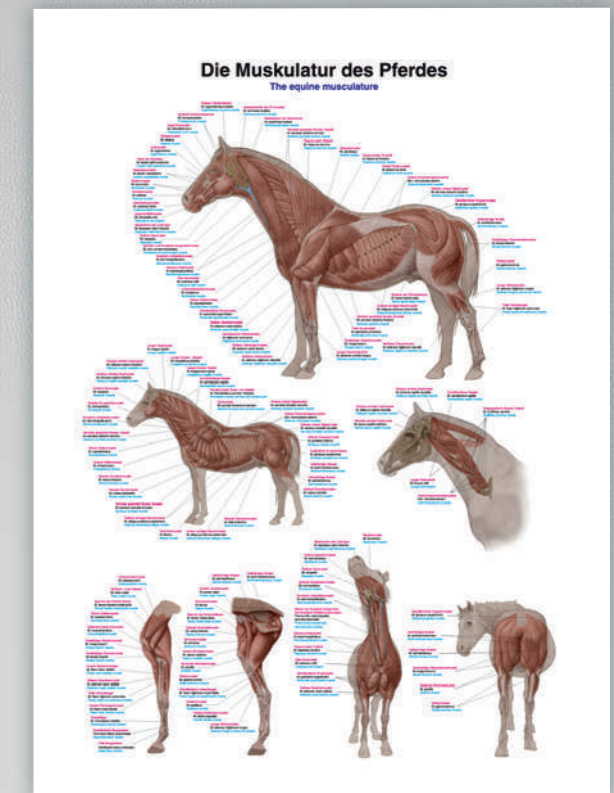
50 x 70 cm 70 x 100 cm
 Item No. VL610 Item No. VL110



The equine skeleton

Anatomical chart in German, Latin, English.

50 x 70 cm 70 x 100 cm
 Item No. VL700 Item No. VL200



The equine musculature

Anatomical chart in German, Latin, English.

50 x 70 cm 70 x 100 cm
 Item No. VL710 Item No. VL210

Small animal skin





Small animal subcutaneous puncture trainer

On this multi-layered tissue pad, subcutaneous injections in dogs and cats can be practiced in a realistic way. The skin-like surface can be palpated into cutis and subcutis and enables a fold of skin to be raised to locate the correct injection depth. Smaller amounts of injection volumes can be applied to the pad and different injection angles and depths can be trained. The soft surface closes after injection and allows multiple injections to be used. The trainer includes a holder with suction cups for secure attachment to the table.

Item No. VET5055

IM puncture trainer small animal

On this two-layer muscle pad, intramuscular injections on small animals can be practically trained. The lifelike skin surface simulates the soft skin of a dog or cat in texture and feel. Smaller amounts of injection volumes can be applied to the pad and different injection angles and depths can be trained. The skin-like surface closes after injection and allows multiple injections to be used. This trainer comes with a suitable jig with suction feet to adhere safely on the tabletop.

Item No. VET5050

Replacement Parts:

Subcutaneous puncture pad small animal
Item No. VET5055A

Im puncture pad small animal
Item No. VET5050A

Holder for injection cushion VET5050A or VET5055A
VET5050B



IM & SubK Injection Pad

Even animals have nerve cells to indicate pain or discomfort and having an injection administered by a skilled medical person makes a world of difference to a pet. Now you can practice and become more apt at injections with the improved SQ/IM Injection Pad. Practical experience may help burnish the clinical motor skills, but alas, it is providing better critical care to the injured animal that is, perhaps the ideal. This trainer features an even more realistic pad simulating canine skin and muscle tissue and comes in its own ABS case.

Item No. VET4070



Cystocentesis Simulator

The Cystocentesis model simulates a small animal abdominal wall and bladder to provide a realistic platform to develop and refine skills without requiring a live animal. Able to be used in conjunction with an ultrasound, real-world practices can be fully implemented. Included in the package is one base, two bladders, and a skin "sleeve". The skin is designed to envelope the base so that students can practice multiple times by rotating it further around the base to expose an unused skin surface.

Item No. SRE0610



Replacement Parts:

Bladders (2) and Clip
Item No. SRE0610-1

Skin
Item No. SRE0610-2



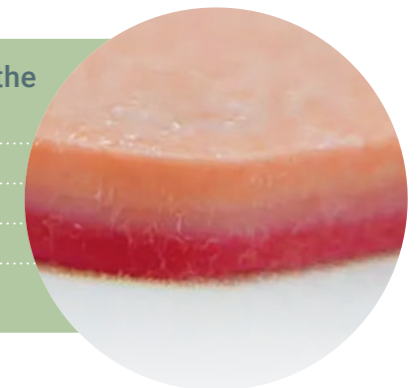
Simulated Rat/Mouse Tissue with Real Layer Technology

Each layer is uniquely formulated to replicate its respective real-life tissue layer, the textures and relative body wall strength of a lab animal. This Rat/Mouse Suture Pad is designed to mimic the first 5 layers of the abdominal wall of a rat or mouse.

Item No. SRE0200LLARM

The layers replicate the

- + Epidermis
- + Subcutaneous
- + first Fascia layer
- + Muscle
- + second Fascia layer



EXPERTS IN MEDICAL EDUCATION

Erler-Zimmer Medical GmbH

Hauptstraße 27 · 77886 Lauf · Germany

T +49 7841 / 67191-0 · F +49 7841 / 67191-99

info@erler-zimmer.de

www.erler-zimmer.de

Follow us!

