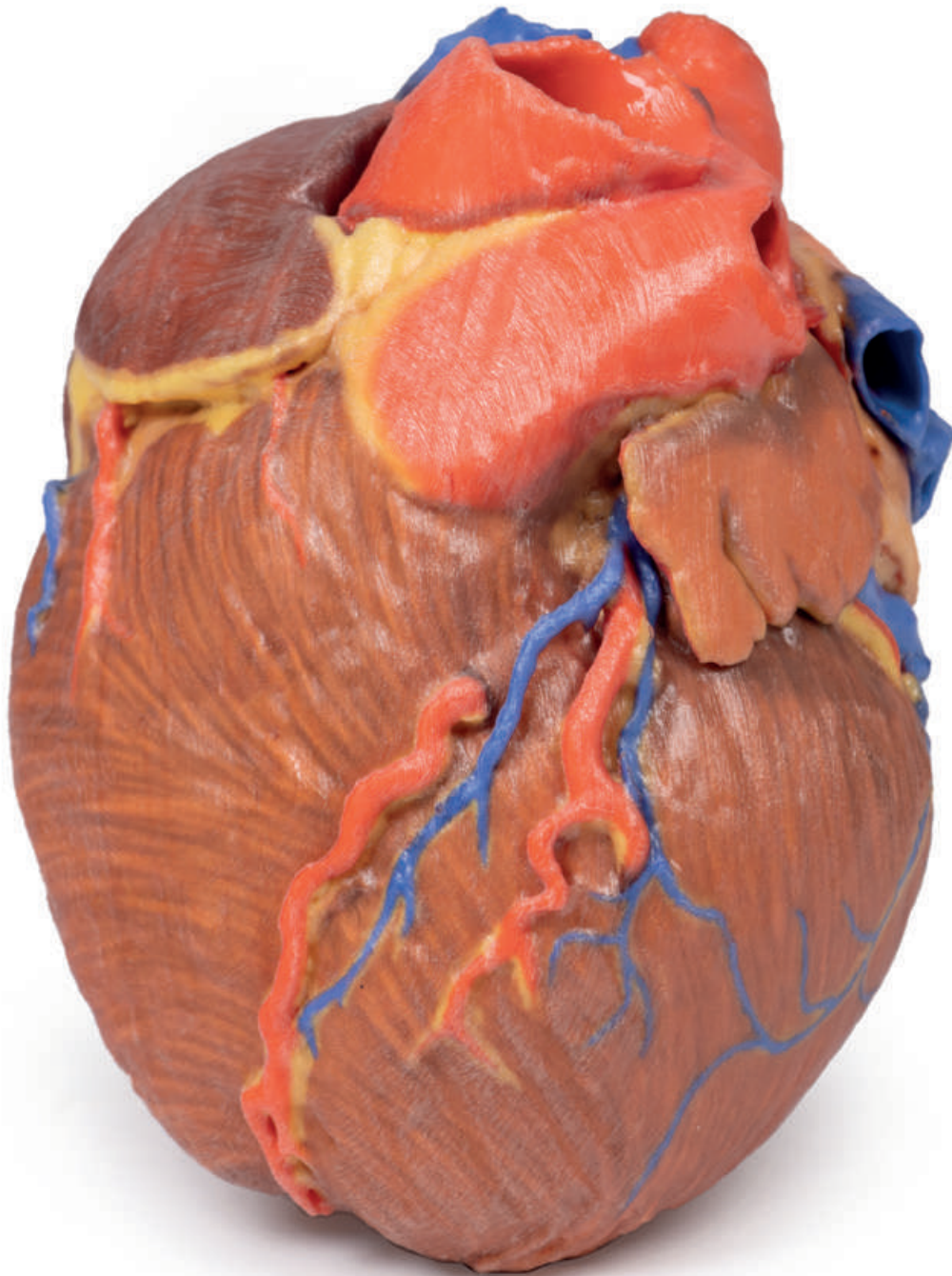


Heart #1



Ref.no.: MP1700

Heart #1

This 3D print preserves the superficial anatomy of an isolated heart and bases of the great vessels. All four chambers (atria and ventricles) are preserved, with the pericardial reflections on the left atrium demarcating the position of the transverse and oblique pericardial sinuses. The right marginal branch of the right coronary artery is visible exiting from the fat-filled coronary sulcus, as well as the posterior interventricular (posterior descending) artery within its sulcus. The anterior interventricular (left anterior descending) and diagonal branches from the left coronary artery are also visible anteriorly, as well as the terminal portion of the circumflex branch deep to the left auricle and great cardiac vein. On the posterior aspect, the coronary sinus receives all the cardiac veins (great, middle, small) and a prominent posterior vein of the left ventricle. The aortic and pulmonary semilunar valves are visible at the bases of the ascending aorta and pulmonary trunk, respectively.

