

Product Portfolio

Wound and Trauma Simulation



Detailed wound and trauma simulations for professional training and realistic application

Realistic wound simulations and wound moulages are both excellent teaching aids and essential tools for paramedics, emergency services, medical professionals and anyone wishing to further their education and training in wound care. From simple cuts to gunshot wounds and open fractures, we offer models that are tailored to your needs.

Wound simulations from the manufacturer Erler-Zimmer are handmade in Germany. Our wound simulators are manufactured with great care and precision. We use skin-like materials such as silicone and latex to ensure a realistic look and feel. The models are designed with great attention to detail and can simulate bleeding.

Product Features

- + **Impressively realistic**
Exceptionally lifelike - down to the smallest detail
- + **Ready for immediate use**
Simply unpack and get started straight away
- + **Quick cleaning**
Effortless care for quick use
- + **Firm hold**
Secure fit on skin and training dummies
- + **Integrated bleeding function**
For even more realistic simulations
- + **Practical storage box**
Safe and space-saving storage for every use
- + **Made in Germany**
Precision and quality at the highest level

Wound moulage cut with bleeding function

This wound moulage shows a large, deep cut with a tube for the bleeding function. The moulage adheres to skin or a manikin. For longer training or improved adherence an optional glue is available.

Item No. NW100



Wound moulage laceration with bleeding function

This moulage shows large lacerations with a tube for the bleeding function. The moulage adheres to skin or a manikin. For longer training or improved adherence an optional glue is available.

Item No. NW101



With integrated bleeding function

Glass splinter cut

Moulage with a cut caused by a glass splinter.

Item No. NW001



Laceration

This moulage shows a cut of about 1cm depth.

Item No. NW002



Bottle cut

Moulage with cut by a bottle.

Item No. NW009



Puncture wound

Moulage with puncture wound and tubing for bleeding function.

Item No. NW115



Throat cut

Moulage with throat cut and Velcro for the neck.

Item No. NW125



Neck stab wound

Moulage with neck stab wound and Velcro for the neck.

Item No. NW126



Thigh stab wound

Moulage with thigh stab wound.

Item No. NW129



Suicide attempt

Moulage with suicidal forearm injury to the artery along the longitudinal axis.

Item No. NW121



Laceration

Moulage with laceration and irregular wound edges.

Item No. NW003



With integrated bleeding function. A built-in, invisible tube allows the wound to bleed independently. The tube is connected to an infusion bag, which can be filled with artificial blood.



Open leg fracture with bleeding function

This moulage depicts an open fracture of a large limb bone, with tubing for bleeding function. The moulage adheres independently to simulation patients or mannequins but can also be fixed with special skin adhesive for longer training sessions.

Item No. NW103



Open arm fracture

Moulage with open fracture of a smaller limb bone.

Item No. NW102



Open bone fracture

Moulage with open bone fracture of a smaller bone.

Item No. NW004



Open ankle fracture

Moulage with open ankle fracture.

Item No. NW136



Colon prolapse

Moulage with protruding colon following abdominal wall injury.

Item No. NW109



Small bowel prolapse

Moulage with protruding small bowel following abdominal wall injury.

Item No. NW111




Human bite wound


Moulage with bite wound from a human.

Item No. NW005



 With integrated bleeding function. A built-in, invisible tube allows the wound to bleed independently. The tube is connected to an infusion bag, which can be filled with artificial blood.

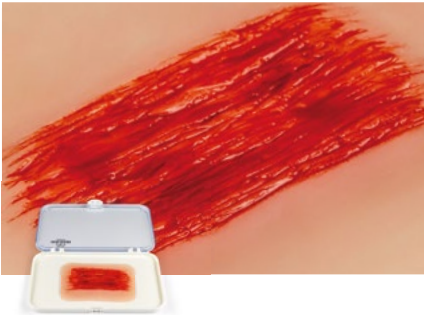


 With integrated bleeding function

Abrasion

Moulage with abrasion.
Contaminants can be added.

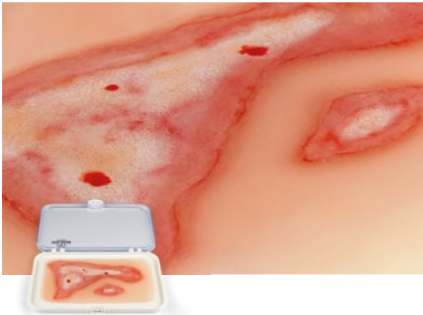
Item No. NW006



Scald

Moulage with scald.

Item No. NW011



Scald, large

Moulage with large scald

Item No. NW108



First-degree burn

Moulage with first-degree burn.

Item No. NW120



Second-degree burn

Moulage with second-degree burn
with blister formation.

Item No. NW007



Third-degree burn

Moulage with third-degree burn
with burned skin layer.

Item No. NW008



Second-degree burn, large

Moulage with large second-degree burn
with blister formation.

Item No. NW106



Third-degree burn, large

Moulage with large third-degree burn
with burned skin layer.

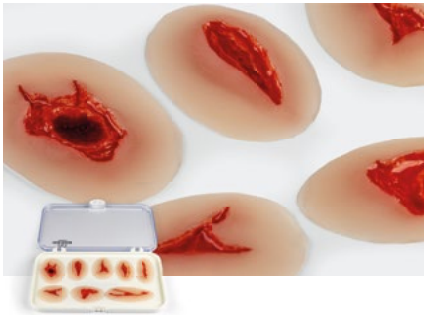
Item No. NW107



Standard wound moulage set

Practical set of various injuries
without the need for makeup.

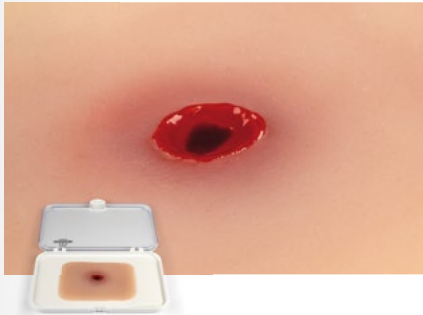
Item No. NW300



Gunshot wound

Moulage with entry wound
of a gunshot injury.

Item No. NW010a



Gunshot exit wound

Moulage with exit wound
of a gunshot injury.

Item No. NW010b



Arm gunshot wound, large

Moulage with entry/exit gunshot wounds
in the arm and bleeding function.

Item No. NW104



Leg gunshot wound, large

Moulage with entry/exit gunshot wounds
in the leg and bleeding function.

Item No. NW105



Ankle gunshot wound

Moulage with entry/exit gunshot wounds
in the ankle and bleeding function.

Item No. NW135



Fresh hematoma

Moulage with fresh hematoma.

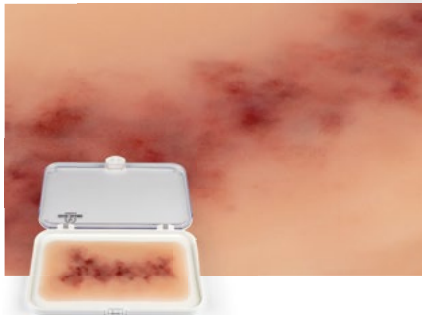
Item No. NW117



Older hematoma


Moulage with older hematoma.

Item No. NW119



Each emergency wound comes in a practical storage box.



 With integrated bleeding function. A built-in, invisible tube allows the wound to bleed independently. The tube is connected to an infusion bag, which can be filled with artificial blood.



With integrated bleeding function

Wound Packing Trainer

This realistic Wound Packing Trainer is ideal for emergency training and the Simulation Patient Program (SPP). It features a lifelike anatomical gunshot wound of a large caliber (expert-verified) with a bleeding function, making it perfect for wound packing practice.

The trainer is made of high-quality, highly durable silicone. All hemostatic wound dressings for bleeding control can be used.

We recommend our washable artificial blood (Art. No. 7024) for use. After training, the trainer can be quickly and easily cleaned.

Item No. 7770



Wound Moulage Wound Packing

This moulage depicts a large injury with severe bleeding for wound packing practice. It includes a tube for the bleeding function. The moulage adheres independently to simulation patients or mannequins but can also be secured with special skin adhesive for longer training sessions.

Item No. NW110



Wound Moulage Stab Wound, Wound Packing

This moulage is made of silicone and depicts a stab wound in the groin area. The wound is deep enough for practicing wound packing with appropriate materials. It is self-adhesive on mannequins or human skin and includes a tube for connecting to a bleeding system.

Item No. NW150



Wound Moulage Gunshot Groin, Wound Packing

This moulage is made of silicone and depicts a gunshot wound in the groin area. The wound is deep enough for practicing wound packing with appropriate materials. It is self-adhesive on mannequins or human skin and includes a tube for connecting to a bleeding system.

Item No. NW160



EZ Wounds Wound Simulation Set ‘Professional’

With this wound simulation set, you can create extremely realistic wounds for medical training in just a few minutes without any makeup skills. The molds included in the set can be filled with the wound simulation paste as often as desired and, once the paste has dried, simply pressed onto the desired position. The wounds adhere independently and without adhesive to the skin or training mannequins.

Simply apply the included blood to the attached wound, and the wound is complete. Attached wounds can be treated multiple times. After the training is finished, the wound can be easily removed and disposed of. The ideal set for the professional training of paramedics, firefighters, or medical professionals.



Item No. WS02



**EZ Wounds
Wound Simulation ‘Basic’**

The set includes a laceration, abrasion, contusion, and an avulsion wound. The included materials consist of wound simulation paste, fixation powder, flesh paste, artificial blood, isopropanol, a spatula for applying the paste, and cotton swabs for applying the blood. This is the ideal set for school first aid teams, youth divisions of rescue services or fire departments.

Item No. WS01



**EZ Wounds
Wound Simulation for Simulation Patients**

The set includes a laceration, abrasion, contusion, and an avulsion wound. Additionally, it contains 4 makeup colors for depicting bruises. The included materials consist of wound simulation paste, fixation powder, flesh paste, artificial blood, isopropanol, a spatula for applying the paste, and cotton swabs for applying the blood. This is the ideal set for professional training in skill labs.

Item No. WS03



Wound Simulation Set Basic

The most economical option for getting started with wound simulation. Reusable wounds and refillable accessories allow for repeated practice of various bandaging and splinting techniques. The simulation set is delivered in a transport case.

Item No. R10042



Wound Simulation Set Multi

This set includes more complex wounds to test advanced bandaging techniques and patient care, with minimal preparation required. The set is delivered in a transport case.

Item No. R10043



Wound Simulation Set Military

This package is specifically designed for simulating a disaster situation, covering the widest range of wounds by makeup of multiple casualties. It includes special gunshot wounds, such as through-and-through injuries, larger avulsion wounds, and complex jaw injuries, as well as a wide range of makeup accessories. The set is delivered in a transport case.

Item No. R10045



Wound Simulation Set Deluxe

This set includes a comprehensive collection of wounds, including 7 bleeding wounds for strapping and 15 adhesive wounds; the complete accessories allow the creation of 70 individual wounds plus additional makeup options for creating realistic scenarios. Delivered with a transport case and instructions (in English).

Item No. R10315



Wound Simulation Set Emergency Medicine

This comprehensive training set for emergency medicine includes items that can be attached to real “patients” or training mannequins, covering a wide range of training scenarios. The set is ideal for simulating public disasters, such as bus accidents or building explosions. The simulation set is delivered in a transport case.

Item No. R10044



Xtreme Trauma Moulage Set

This set shows wounds resulting from explosions and chemical accidents. These simulated injuries help train military and emergency response teams or anyone who needs to practice treating casualties in disasters or warfare. The simulation set is delivered in a transport case.

Item No. R11016



Wound Simulation Set for Manikins

Can be used with any rescue manikin, rescue CPR manikin or nursing doll. Attaching these moulages to a full-body mannequin helps participants quickly identify, diagnose, and treat the wounds. The set includes crush fractures, contusions, lacerations, an evisceration, a pneumothorax, a puncture wound, a crushed foot, a jaw injury, and an entrance and exit wound on the arm. The wounds are strapped on, and a pump system circulates artificial blood, allowing them to bleed realistically. The set comes complete with a pump system and artificial blood. Non-bleeding wounds are also available: 2nd and 3rd-degree burns on the chest, back, forearm, and face.

Item No. R10046





Tourniquet Trainer Bleeding Arm

We present to you our new Tourniquet Training Model – the ultimate product for professional medical training!

Our Tourniquet Training Model is designed to provide a realistic and comprehensive training experience and is the ideal choice for medical professionals, special forces, first responders, and students alike.

- Product Benefits:**
- Realistic simulation
 - Adjustable resistance
 - Anatomically accurate
 - Durable construction
 - User-friendly design
 - Portable and compact
 - Versatile training scenarios

Item No. SE300



Arm with Burns Task Trainer

This life-size cast of a real human arm is made from skin-like material and is movable. The trainer depicts a 2nd-degree burn on the arm, and the extensive burn can be disinfected and bandaged.

Item No. X1100

Trauma Arm Laceration Wound Task Trainer

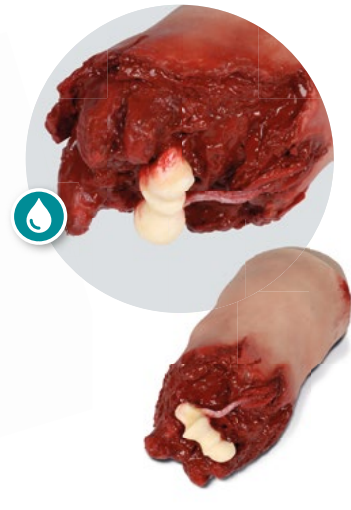
This life-size cast of a real human arm is made from skin-like material and is movable. It features a deep laceration on the forearm with a bleeding system that can bleed when connected to optional bleeding devices. A tourniquet can be applied.

Item No. X1101

Amputated Arm Task Trainer

This trainer depicts an amputation injury on the upper arm. An integrated bleeding system allows for realistic bleeding from the wound when connected to an optional bleeding device. The bleeding can be stopped by properly applying a tourniquet. The trainer is easy to clean.

Item No. X1400



Trauma Leg Task Trainer

Practice first aid and manage a major bleed with the Trauma Leg. The trainer features an injured leg with a laceration, entry, and exit wound. You can apply direct pressure, cover the wound with gauze, apply a pressure bandage, and use a tourniquet to truly stop the bleeding (tourniquet not included).

Item No. X1000



Leg with Gunshot Wound Task Trainer

Life-size cast of a real human leg made from soft, movable material. The thigh features a gunshot wound with both an entry and exit wound. The wound can bleed realistically through a bleeding system and an optional bleeding device. Bleeding can be controlled by wound packing or by properly applying a tourniquet.

Item No. X1300



Leg with Open Fracture Task Trainer

Life-size cast of a real human leg made from lifelike, movable plastic. The trainer features an open fracture on the shin. The injury can bleed realistically through the integrated bleeding system and an optional bleeding device, and the bleeding can be stopped by properly applying a tourniquet.

Item No. X1301



Amputated Leg Task Trainer

This trainer depicts an amputation injury on the leg. An integrated bleeding system allows for realistic bleeding from the wound when connected to an optional bleeding device. The bleeding can be stopped by properly applying a tourniquet. The trainer is easy to clean.

Item No. X1401



With integrated bleeding function



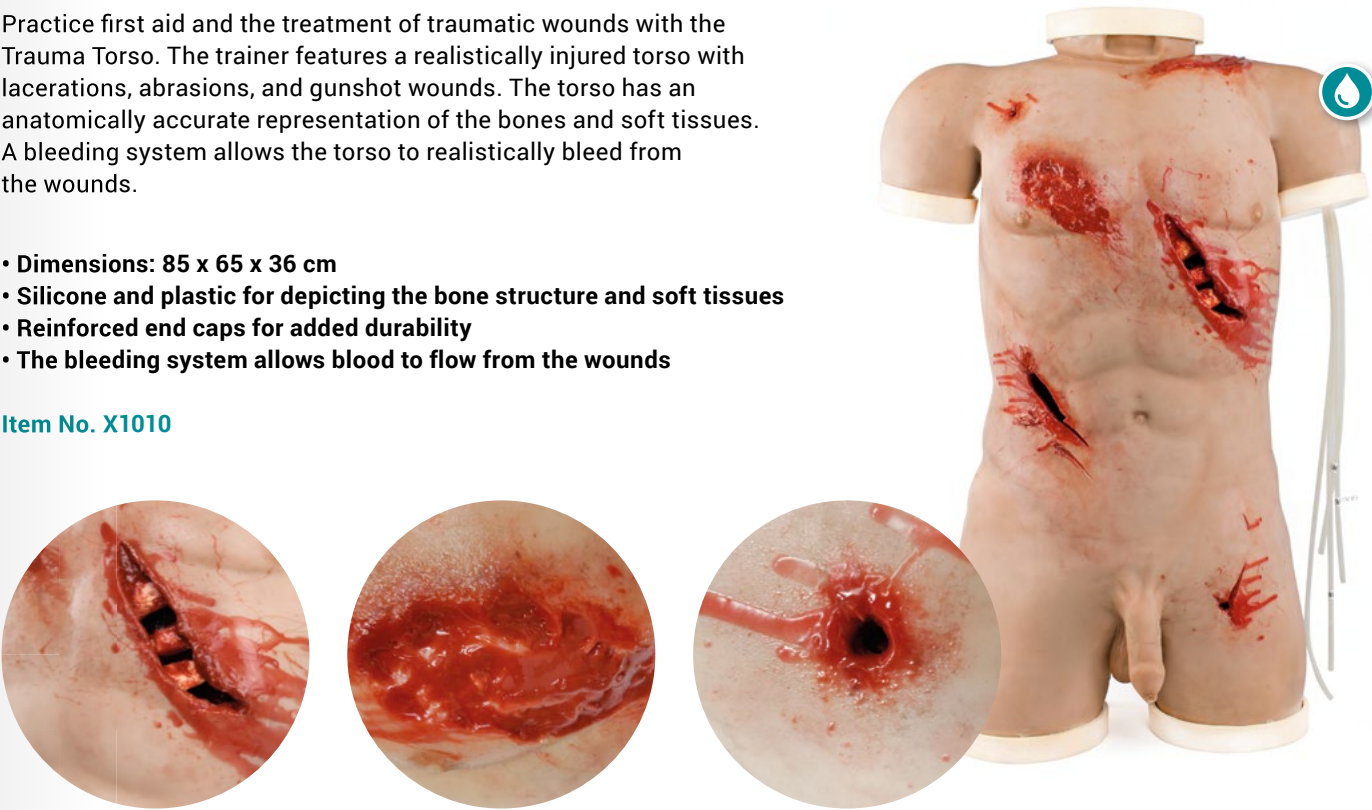
With integrated bleeding function

Trauma Training Torso

Practice first aid and the treatment of traumatic wounds with the Trauma Torso. The trainer features a realistically injured torso with lacerations, abrasions, and gunshot wounds. The torso has an anatomically accurate representation of the bones and soft tissues. A bleeding system allows the torso to realistically bleed from the wounds.

- Dimensions: 85 x 65 x 36 cm
- Silicone and plastic for depicting the bone structure and soft tissues
- Reinforced end caps for added durability
- The bleeding system allows blood to flow from the wounds

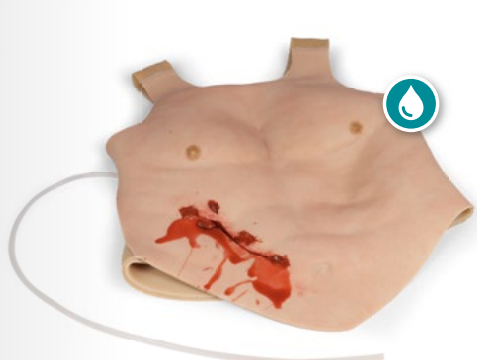
Item No. X1010



Chest Skin with Shrapnel Wound for Strapping

This soft plastic skin can be strapped onto a mannequin or a person and simulates a shrapnel wound on the abdomen. An integrated bleeding system allows for realistic bleeding from the wound when connected to an optional bleeding device.

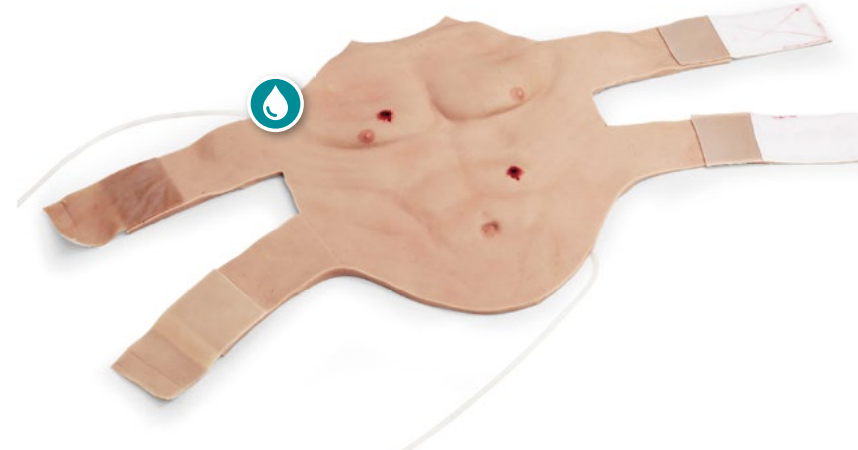
Item No. X1200



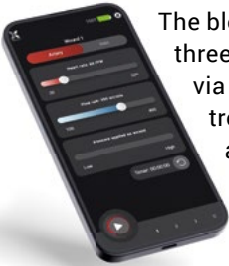
Chest Skin with Gunshot Wounds for Strapping

This soft plastic skin can be strapped onto a mannequin or a person and simulates gunshot wounds to the chest and abdomen. An integrated bleeding system allows for realistic bleeding from the wounds when connected to an optional bleeding device.

Item No. X1201



Portable Device for Bleeding Simulation



The bleeding device consists of a pump module with three connections, which can be wirelessly controlled via the included mobile phone (used solely as a controller). The three connections can simulate arterial and venous bleeding, with the amount of bleeding adjustable. The pump features sensors that stop the pump when the line is closed (e.g., during wound packing) to prevent damage. The pump module has a built-in battery, which allows for 2 to 20 hours of use, depending on the load. The rechargeable battery can be replaced by a layperson and is a standardized battery; a charger is included. The pump module is integrated into a backpack with a hydration bladder for blood supply but can also be removed and used externally.

Item No. NW500



‘Bloody M.A.R.C’ Bleeding Pump with Reservoir Backpack

This blood supply module is perfectly suited for our wounds with bleeding functionality. The reservoir backpack holds up to 3 liters of artificial blood, which can be pumped into up to 4 wounds simultaneously via a hand pump. The backpack design ensures that the blood supply is discreet and seamlessly integrates into the training scenario. The reservoir bag features an extra-large opening, allowing for quick and easy removal of the blood and flushing of the bag after the exercise.

Item No. NW900



‘Bloody M.A.R.C’ Blood Pump Module with Reservoir and Remote Control



The Bloody Mobile Automated Remote Circuit blood supply module is perfectly suited for our wounds with bleeding functionality. The reservoir backpack holds up to 3 liters of artificial blood, which can be pumped into up to 4 wounds simultaneously via an electronic pump. The pump is powered by a rechargeable battery pack and is controlled via Bluetooth remote, adjusting the flow strength and pulse rate. The backpack design ensures that the blood supply is discreet and seamlessly integrates into the training scenario. The reservoir bag features an extra-large opening, allowing for quick and easy removal of the blood and flushing of the bag after the exercise.

Item No. NW950



Artificial Blood, 2000 ml

Canister with Artificial Blood, compatible with the bleeding device.

Item No. NW599



Blood-colored Liquid, 250 ml

For use in injection training arms or wound simulation.

Item No. 7024



Makeup Blood, 250 ml

Makeup Blood for realistic accident simulation.

Item No. 7025



Powder for Artificial Blood

By adding water, you will obtain 1000 ml of artificial blood.

Item No. 7026



Skin Tite

Skin Tite for extreme adhesion of moulages, 225g tube.

Item No. 7700



Artificial glass

Artificial glass for shatter simulation.

Item No. NW200



EXPERTS IN MEDICAL EDUCATION

Erler-Zimmer GmbH & Co. KG

Hauptstraße 27 · 77886 Lauf · Germany

T (+49) 7841 / 67191-0 · F (+49) 7841 / 67191-99

info@erler-zimmer.de

www.erler-zimmer.de

Follow us!

