

Abdomen Phantom PV Mixed Cylinders



Factsheet

Item No. NLP1750





This phantom simulates a contrast medium enhanced abdomen in portal venous phase. It covers the eleventh thoracic vertebra to the fourth lumbar vertebra (partially included).

The phantom has 35 rod-shaped liver lesions with 5 to 15 mm diameter and lesion contrasts of 25 to 110 HU to the surrounding liver. The phantom can be used in CT (including CBCT) to evaluate and optimize imaging performance and post-processing applications, including AI-enabled applications. It is also suited for training purposes. The phantom provides a detailed and realistic simulation of soft and bone tissue.

Diagnostic features:

Realistic simulation of vasculature, bone and soft tissues, including the liver, gallbladder, pancreas, spleen, adrenals, kidneys, stomach, small intestine and colon.

35 rod-shaped liver lesions in 5 sections.

Lesion diameter: 5 to 15 mm

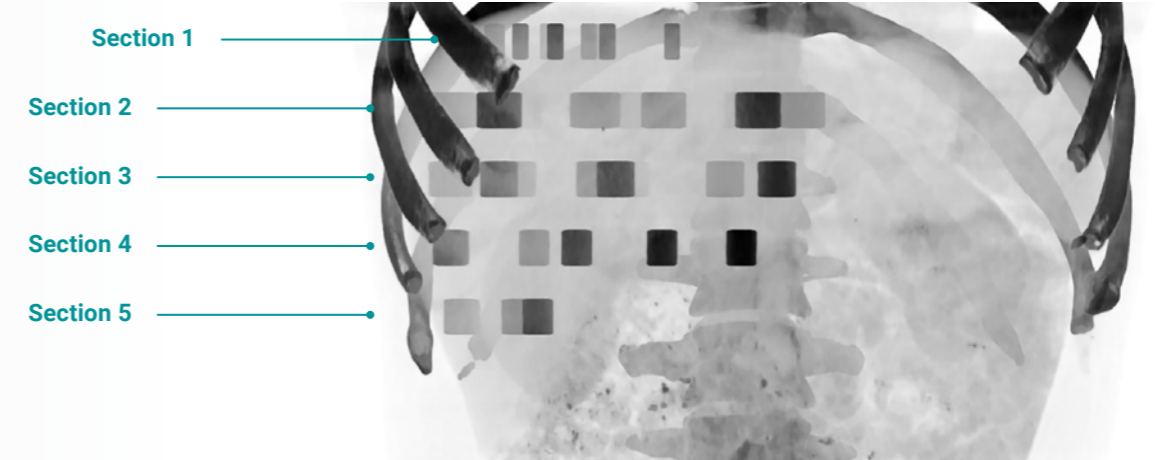
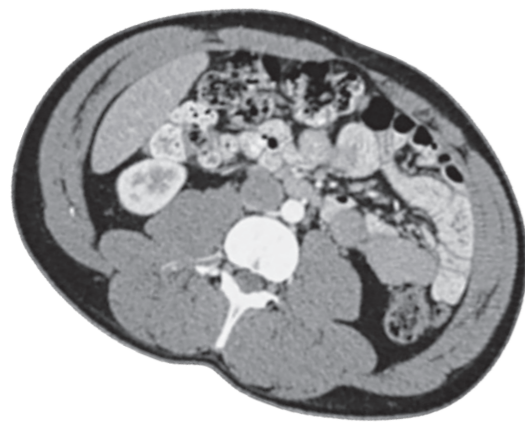
Nominal lesion contrasts*:
25 to 110 HU at 120 kVp

- | | |
|----------------------|----------------------|
| Section 1: 8 lesions | Section 4: 6 lesions |
| Section 2: 9 lesions | Section 5: 3 lesions |
| Section 3: 9 lesions | |

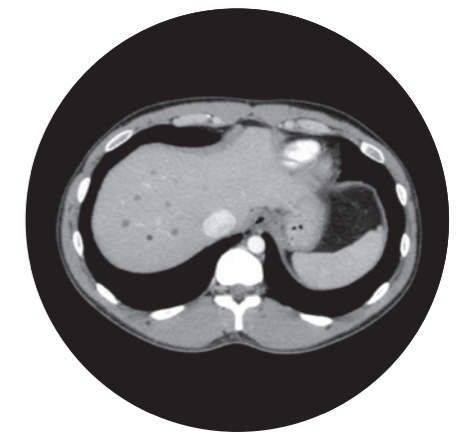
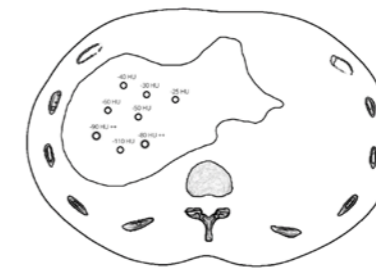
*cf. page 5 for measurement of lesion contrast

Specifications

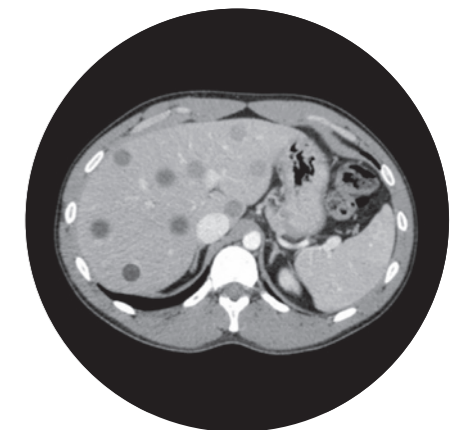
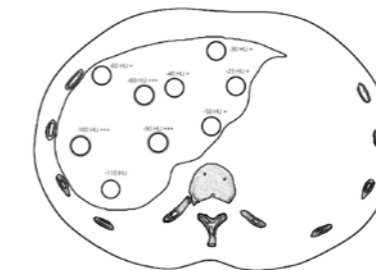
- Size: approx. 27 x 19 x 15 cm
- Weight: approx. 4.95 kg
- Base Material: cellulose-polymer composite
- Optimal Tube Voltage: 120 kVp (adaptable upon request)



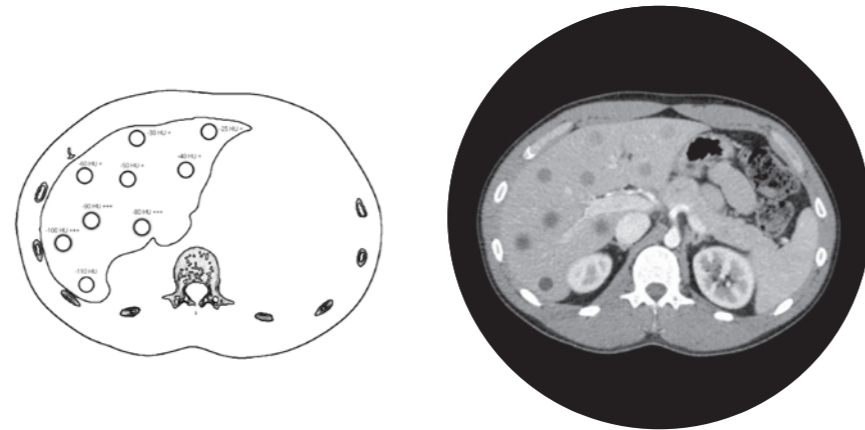
Exemplary image of section 1
Drawing indicates nominal lesion contrast to surrounding liver tissue. Crosses indicate edge blurr.



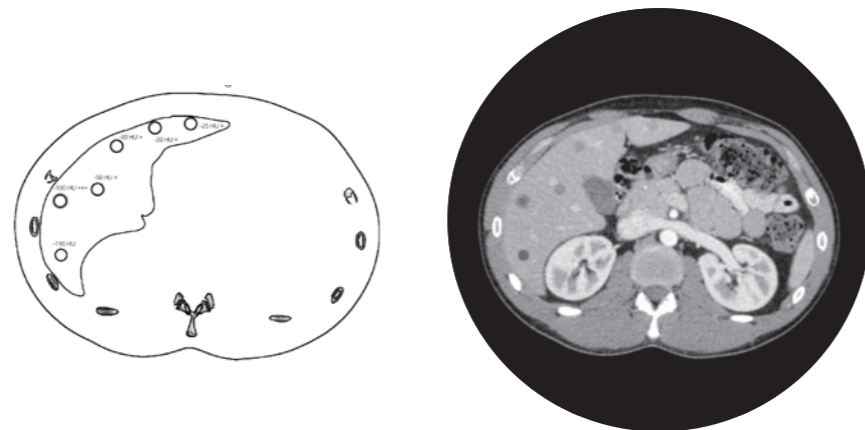
Exemplary image of section 2
Drawing indicates nominal lesion contrast to surrounding liver tissue. Crosses indicate edge blurr.



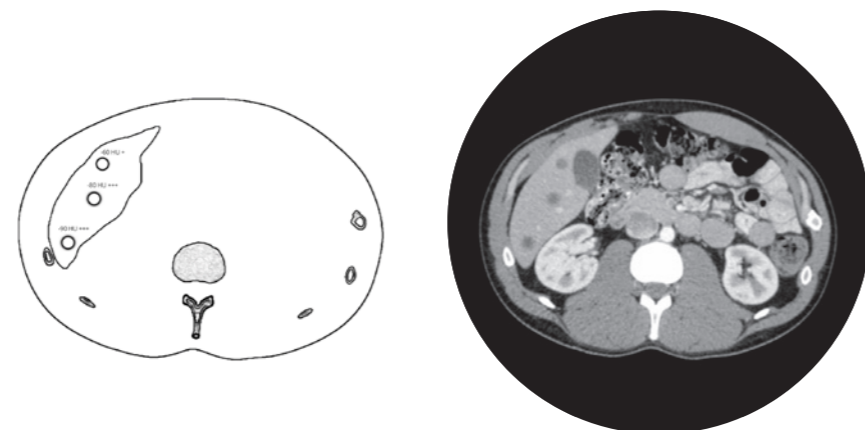
Exemplary image of section 3
Drawing indicates nominal lesion contrast to surrounding liver tissue. Crosses indicate edge blurr.



Exemplary image of section 4
Drawing indicates nominal lesion contrast to surrounding liver tissue. Crosses indicate edge blurr.



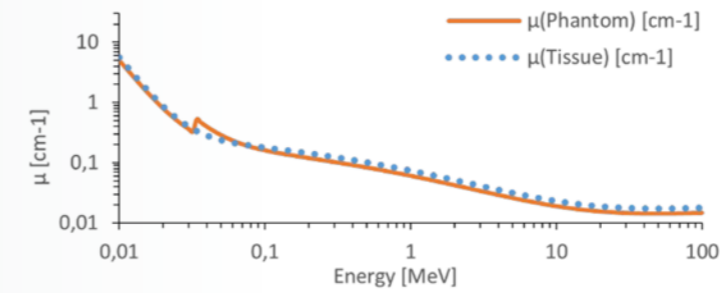
Exemplary image of section 5
Drawing indicates nominal lesion contrast to surrounding liver tissue. Crosses indicate edge blurr.



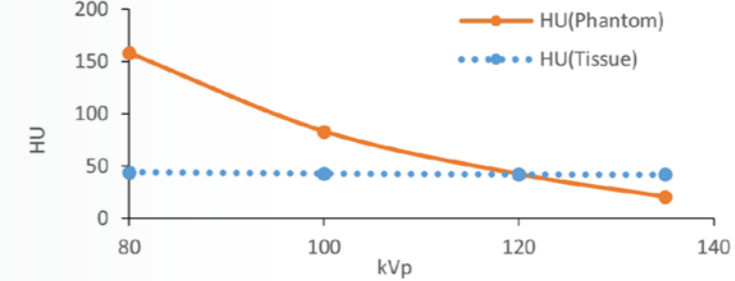
Attenuation properties

Soft Tissue

Linear attenuation coefficients [cm⁻¹] (calculated)

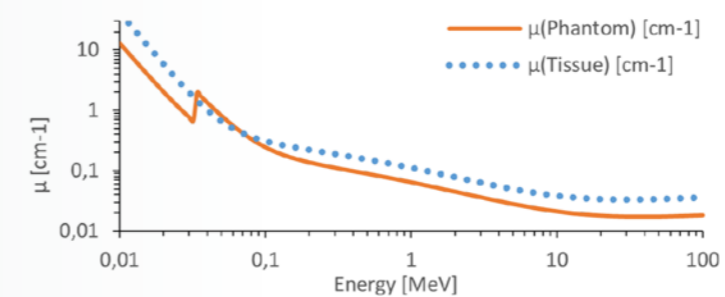


Hounsfield units (calculated)

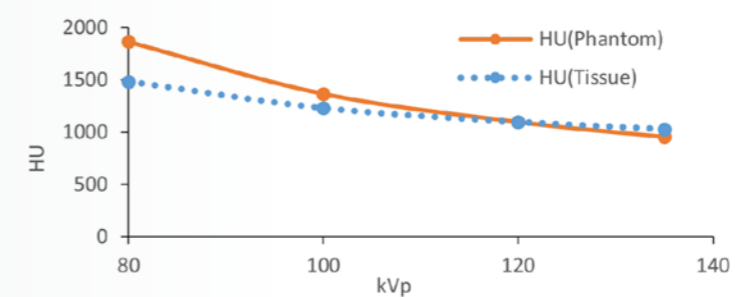


Bone Tissue

Linear attenuation coefficients [cm⁻¹] (calculated)



Hounsfield units (calculated)



Tissue Reference: Woodard HQ, White DR. The composition of body tissues. Br J Radiol. 1986.

General indications

- The phantom is made of a cellulose-polymer composite material with properties similar to hardwood. If handled carefully, it will last a long time.
- The phantom is coated with a protective layer. If the protective layer is undamaged, the phantom can be cleaned using a damp cloth (water or mild detergent).
- Protect from direct sunlight.
- Maintain a storage temperature of 10 °C to 30°C. If the phantom is exposed to temperatures below -10 °C or above 45 °C, it can be severely damaged.
- The phantom is not equipped for dose measurements with dosimeters and it is not suited for material characterization with dual energy CT.
- The phantom is not certified as medical device.
- Air voids are filled with cellulose-polymer composite of approx. -160 HU.
- Handle with care to prevent injury or damage.

Lesion contrast

Lesion contrast can vary based on protocol settings, including dose and reconstruction algorithm, as well as the chosen measurement method.

To measure lesion contrast, it is recommended to define volumes of interest (VOIs) that encompass most of the lesion and adjacent tissue. Edges of the lesion should be avoided, and measurements should be averaged across multiple scans to improve reliability, given the inherent noisiness of low-contrast measurements.

The VOI should cover at least one-third of the lesion volume, and the VOI for adjacent tissue should be equal to or larger than the lesion volume.

EXPERTS IN MEDICAL EDUCATION

Erlor-Zimmer Medical GmbH

Hauptstraße 27 · 77886 Lauf · Germany

T +49 7841 / 67191-0 · F +49 07841 / 67191-99

info@erler-zimmer.de

www.erler-zimmer.de

Follow us!

