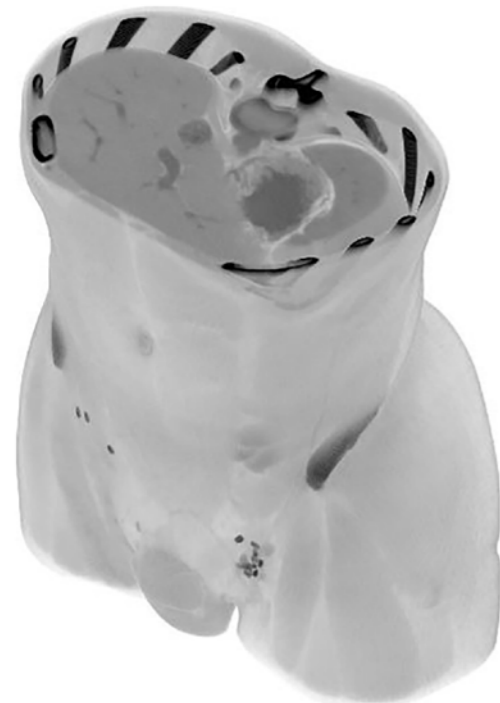


Abdomen/Pelvis Phantom Portal Venous Phase



Factsheet

Item No. NLP1800



This phantom simulates a contrast medium enhanced abdomen and pelvis in portal venous phase. It covers the first lumbar vertebra to the perineum. It has iliac lymph node masses on the right side.

The phantom can be used in CT (including CBCT) to evaluate and optimize imaging performance and post-processing applications, including AI-enabled applications. It is also suited for training purposes. The phantom provides a detailed and realistic simulation of soft and bone tissue.

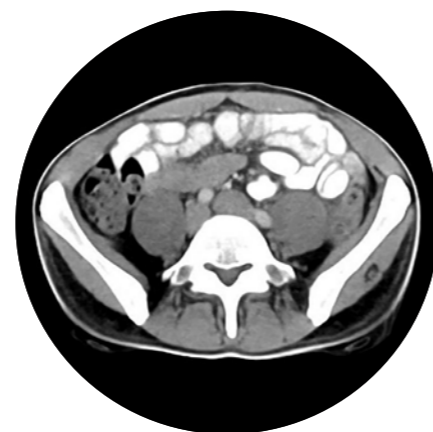
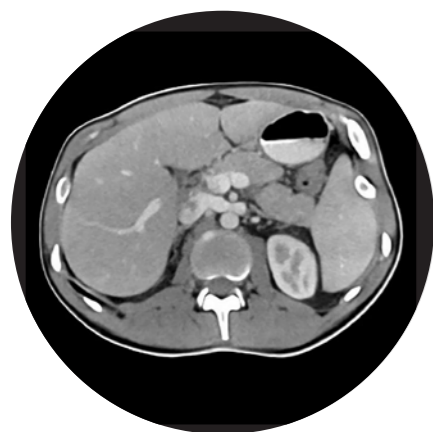
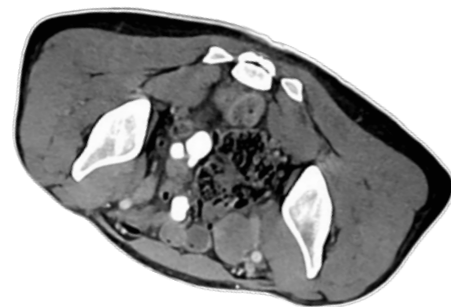
Diagnostic features:

Realistic simulation of vasculature, bone and soft tissues, including the liver, gallbladder, pancreas, spleen, adrenals, kidneys, stomach, small intestine, colon, bladder and prostate.

External iliac lymph node masses on the right side.

Specifications

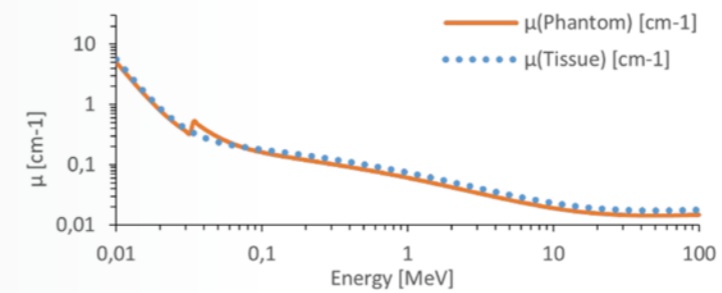
Size: approx. 26 x 19 x 29 cm
 Weight: approx. 6.99 kg
 Base Material: cellulose-polymer composite
 Optimal Tube Voltage: 120 kVp (adaptable upon request)



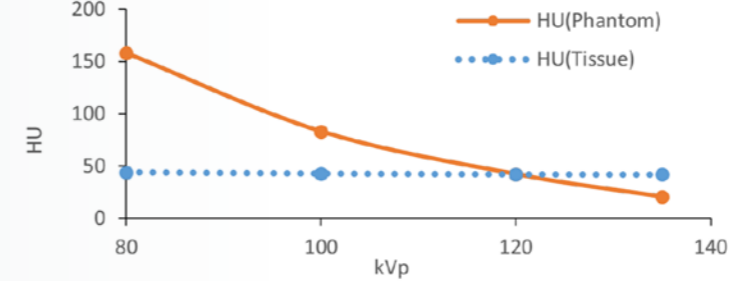
Attenuation properties

Soft Tissue

Linear attenuation coefficients [cm⁻¹] (calculated)

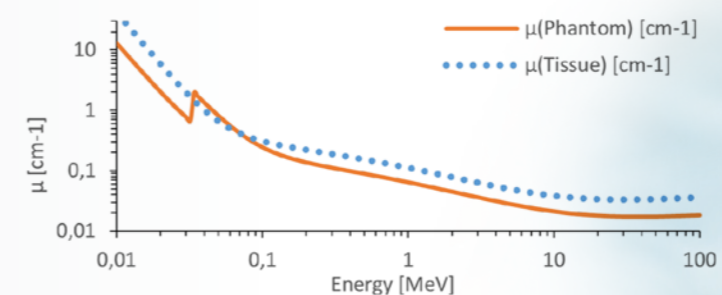


Hounsfield units (calculated)

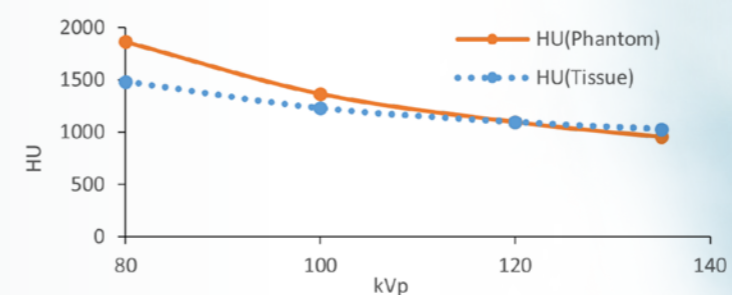


Bone Tissue

Linear attenuation coefficients [cm⁻¹] (calculated)



Hounsfield units (calculated)



Tissue Reference: Woodard HQ, White DR. The composition of body tissues. Br J Radiol. 1986.

General indications

- The phantom is made of a cellulose-polymer composite material with properties similar to hardwood. If handled carefully, it will last a long time.
- The phantom is coated with a protective layer. If the protective layer is undamaged, the phantom can be cleaned using a damp cloth (water or mild detergent).
- Protect from direct sunlight.
- Maintain a storage temperature of 10 °C to 30°C. If the phantom is exposed to temperatures below -10 °C or above 45 °C, it can be severely damaged.
- The phantom is not equipped for dose measurements with dosimeters and it is not suited for material characterization with dual energy CT.
- The phantom is not certified as medical device.
- Air voids are filled with cellulose-polymer composite of approx. -160 HU.
- Handle with care to prevent injury or damage.



EXPERTS IN MEDICAL EDUCATION

Erler-Zimmer Medical GmbH

Hauptstraße 27 · 77886 Lauf · Germany

T +49 7841 / 67191-0 · F +49 07841 / 67191-99

info@erler-zimmer.de

www.erler-zimmer.de

Follow us!

